

Handwheel table

Material and option available

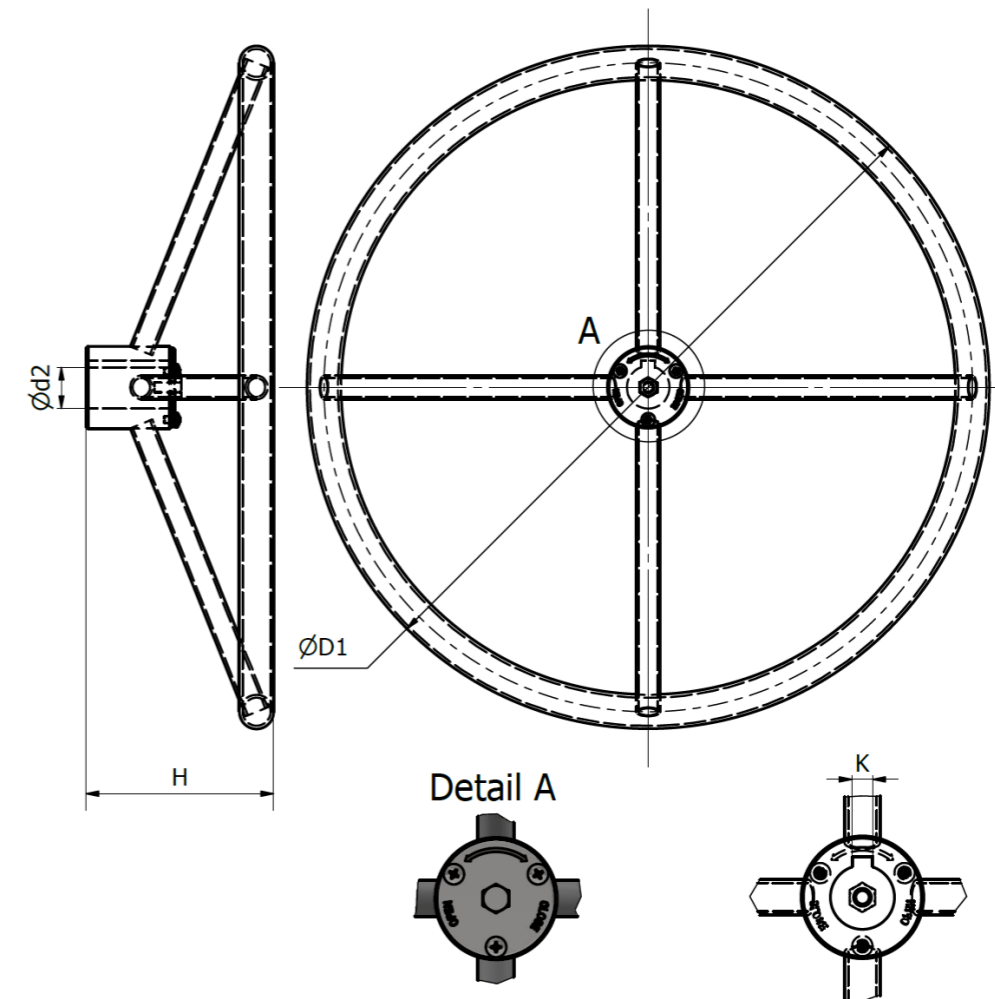
Dimension – Ø Wheel	
H	ØD1
85	Ø200
85	Ø250
90	Ø280
90	Ø300
100	Ø320
110	Ø360
110	Ø400
130	Ø460
130	Ø500
150	Ø600
150	Ø700
150	Ø750
180	Ø800

Material	
Code	Material
A1	TUBE CARBON STEEL RAL 9005
A2	TUBE CARBON STEEL RAL 3020
A3	SOLID CARBON STEEL 9005
A4	TUBE CARBON STEEL RAL 9005 AND FLAT DESIGN
B2	TUBE SS 316
B3	SOLID SS 316
B4	SOLID SS 316 AND FLAT DESIGN
B5	TUBE SS 316 AND FLAT DESIGN

Gear Type	
Gear	Type
QT	QUARTER TURN
MT	MULTI TURN

Option	
Code	Option
0	
S	SQUARE NUT 2"
H	HANDLE
D	ADDITIONAL RETENTION SCREW (IOGP)

Shaft	Key
Ød2 - +0,7/-0	K - +0,5/-0
15	5
18	6
20	8
25	10
30	12
35	
40	



Note:

The handwheel diameter of 200-250-300-400-500-600-700 are available in stock. Dimension and weight without tolerance are ±3%

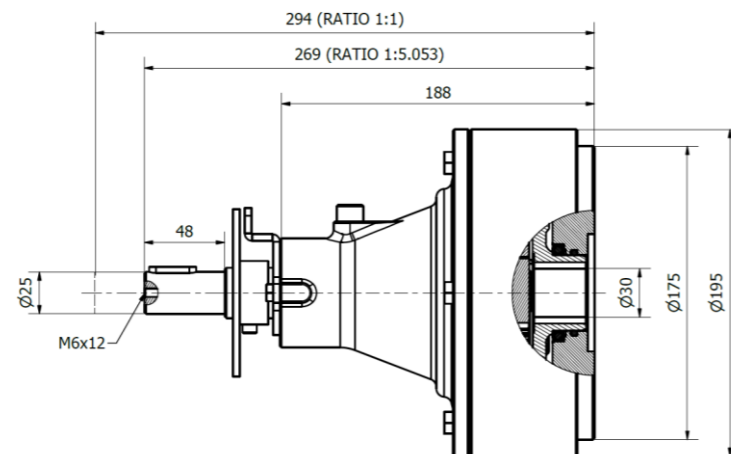
DSG - Dual Speed Gear

Maxnovo Dual Speed Ratio is a gear that allows to reduce the number of rotations to open and close the valve reducing the operating time on manual valve applications. DSG speed ratio can be easily switched by pushing or pulling the input shaft. The high-speed ratio is used for high torque when the valve is opened (BTO) and finally closed (ETC) to achieve easy opening and closing action without applying excessive force at the handwheel. The low-speed ratio is used to quickly open or close the valve during the low torque (running) travel.

- Pull the input shaft for Ratio 1:1
- Push the input shaft for Ratio 5.053:1
- Locking device as standard
- IP67 Enclosure as standard
- Easy to install and operate, maintenance free
- Temperature -20 to 80 °C

Technical data

Input torque	200Nm
Maximum output torque	960Nm
Gear Ratio	1:1 & 5.053:1
Mechanical Advnatage for Higher Ratio	4.8 ± 5%



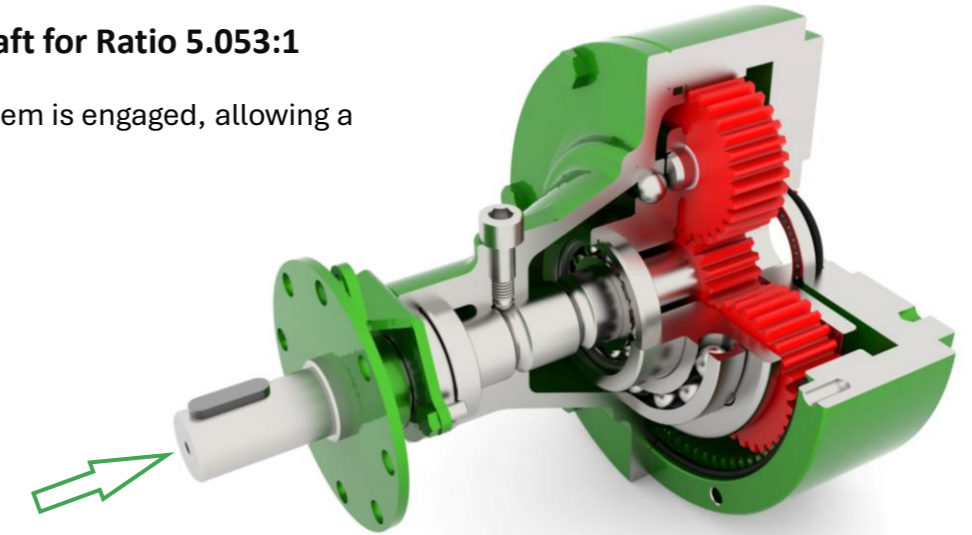
Material List

No.	Component	Material	Standard
1	Body	Carbon Steel	ASTM 216 WCB
2	Coverplate	Carbon Steel	ASTM 216 WCB
3	Input Shaft	Steinless Steel	ASTM A270 420
4	Planetary wheel	Alloy Steel	ASTM 5140
5	Gear Ring	Carbon Steel	ASTM A216 WCB
6	Planetary Carrier	ductile iron	ASTM A536 65-45-12
7	Bearing	Carbon Steel	-
8	O-ring Seal	NBR	-
9	Screws	Carbon Steel	Cl. 8.8

DSG - How it works

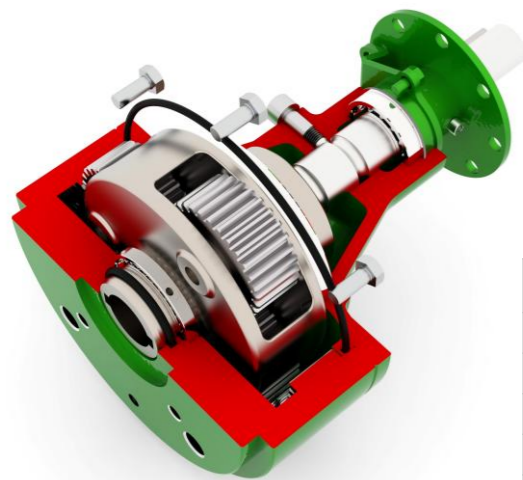
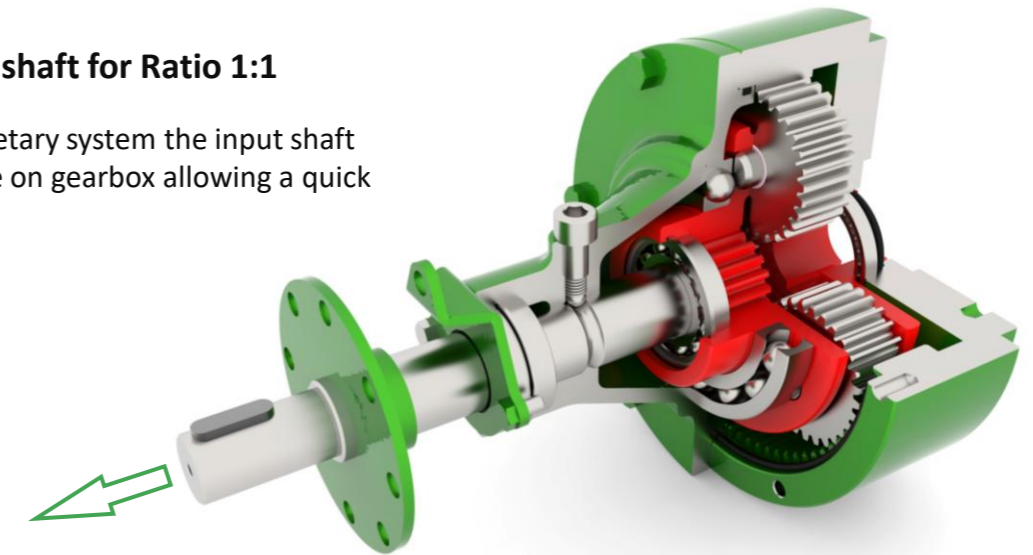
▪ Push the input shaft for Ratio 5.053:1

The planetary gear system is engaged, allowing a easy operation



▪ Pull the input shaft for Ratio 1:1

Disengage the planetary system the input shaft became direct drive on gearbox allowing a quick operation



G-90 – Mieter Gear

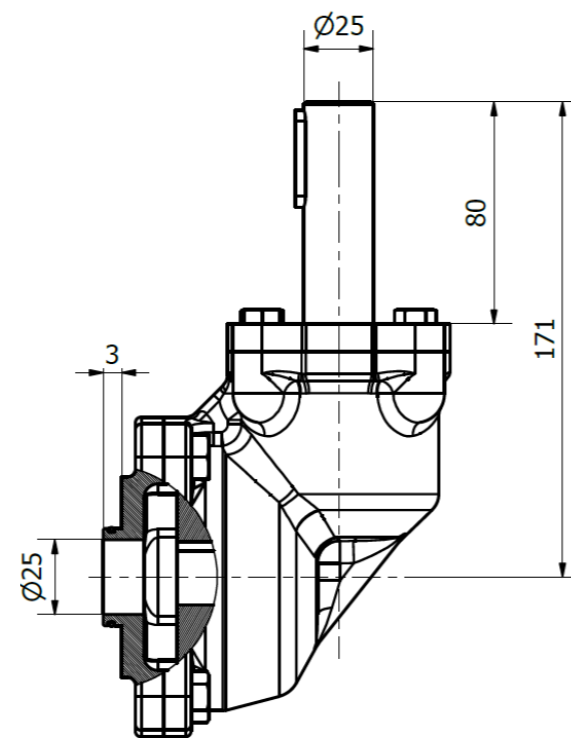
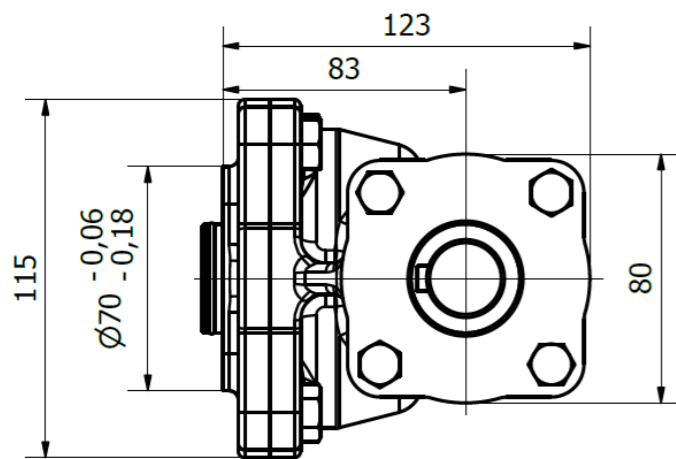
Maxnovo G-90 is a right-angle gearbox that can be mounted on quarter-turn or multiturn gearboxes to achieve the desired input shaft angle.

The G-90 is commonly used for valves installed underground or buried and it is generally operated by an extension rod or extension tube that can be supplied as an option.

- Ratio 1.278:1
- Mechanical Advantage $1 \pm 5\%$
- Input Flange ISO 5210 F10 or F14 as an option
- IP67 Enclosure as standard
- Easy to install and operate, maintenance free
- Temperature -20 to 80 °C

Technical data

Input torque	200Nm
Maximum output torque	200Nm
Gear Ratio	1.278:1
Mechanical Advnatage	$1 \pm 5\%$



G-90 – Configuration



G-90



G-90D

With automation flange

Material List

No.	Component	Material	Standard
1	Body	Ductile Iron	ASMT A536 65-45-12
2	Cover Plate	Ductile Iron	ASMT A536 65-45-12
3	Base Plate	Ductile Iron	ASMT A536 65-45-12
4	Input Shaft	Stainless Steel	ASTM A276 420
5	Gear	Alloy Steel	ASTM 5140
6	Input Falnge	Carbon Steel	ASTM A216 WCB
7	Bearing	Carbon Steel	-
8	O-ring Seal	NBR	-
9	Screws	Carbon Steel	Cl. 8.8

