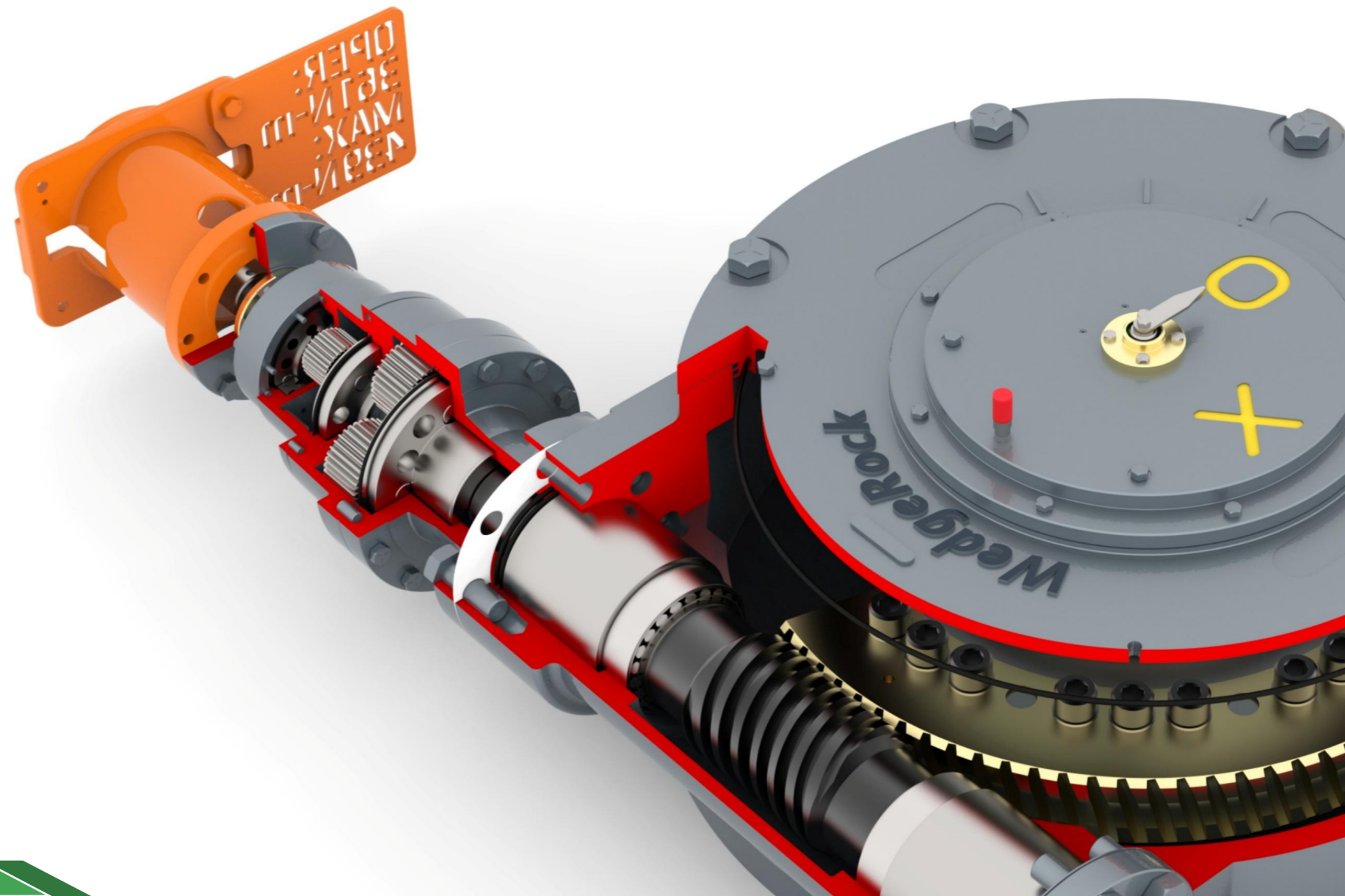


# MAXNOVO



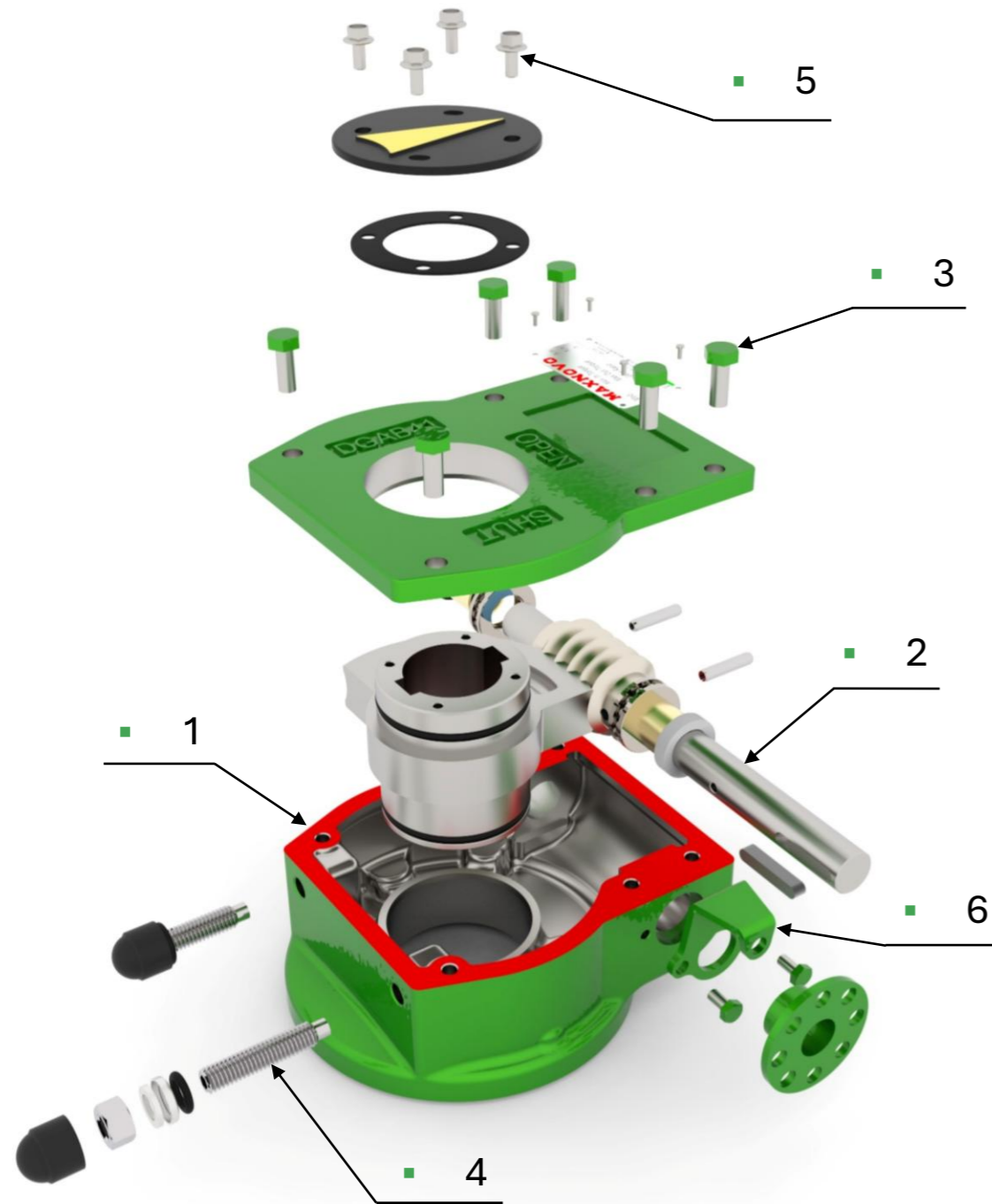
# WEDGEROCK

ENGINEERED SOLUTIONS



# DGAB - D6 Series

Quarter Turn Gearbox



Nr.	A01 DUCTILE IRON		C01 STAINLESS STEEL	
	1	Housing	ASTM A536 65-45-12	Housing
2	Input Shaft	ASTM A276 420	Input Shaft	ASTM A276 316
3	Outside Screws	Grade 8.8	Outside Screws	Grade A4
4	Stop Bolts/Nuts	B7/2H	Stop Bolts/Nuts	B8M/B8M
5	Indicator	Steel (Powder Coated)	Indicator	SS316
6	Locking Device	Carbon Steel	Grease Nipple	SS316

Nr.	B01 MARINE		B02 MARINE	
	1	Housing	ASTM A536 65-45-12	Housing
2	Input Shaft	ASTM A276 316	Input Shaft	ASTM A276 316
3	Outside Screws	Grade 8.8	Outside Screws	Grade A4
4	Stop Bolts/Nuts	B7/2H	Stop Bolts/Nuts	B8M/B8M
5	Indicator	Steel (Powder Coated)	Indicator	SS316
6	Locking Device	Carbon Steel	Locking Device	Carbon Steel

Options	
Grease Nipple	SS316 as option
Relief Valve on indicator	SS316 as option
Relief Valve on body	SS316 as option
Locking Device	SS316 as option

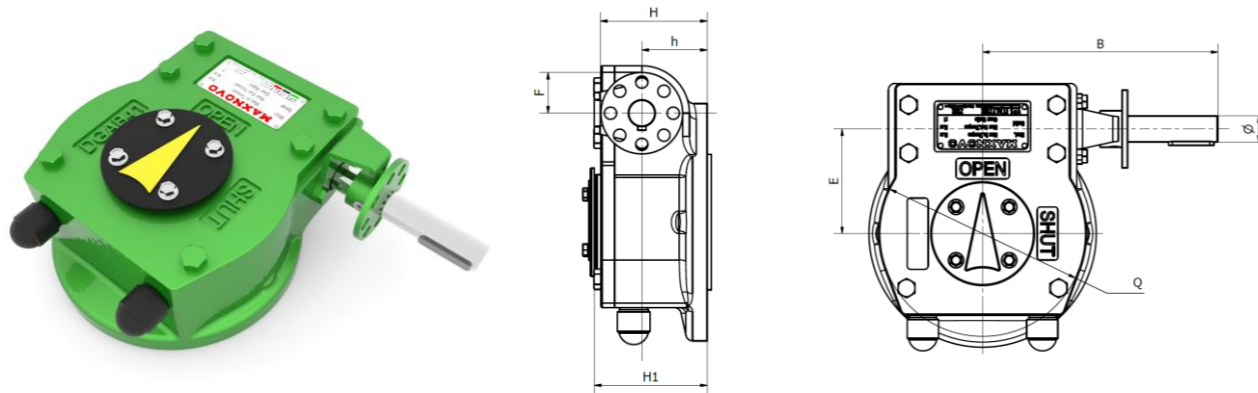
Handwheel Options	
Tube Carbon Steel Powder Coated	
Solid Carbon Steel Powder Coated	
Tube SS316	
Solid SS316	

# DGAB Series

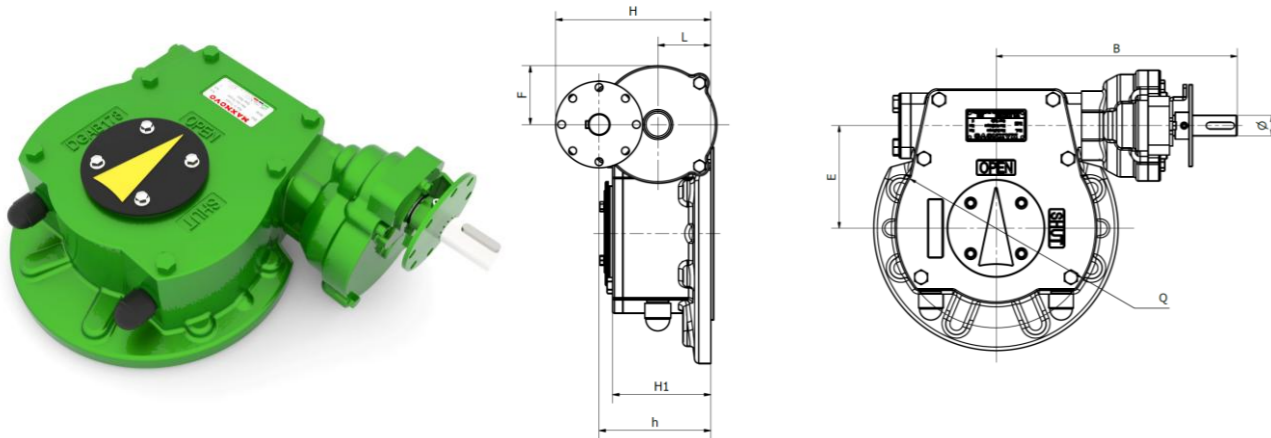
## Quarter Turn Gearbox

Heavy-duty part-turn gearboxes suitable for ball, butterfly, plug valves serving oil & gas, water, power, chemical and demanding industrial application.

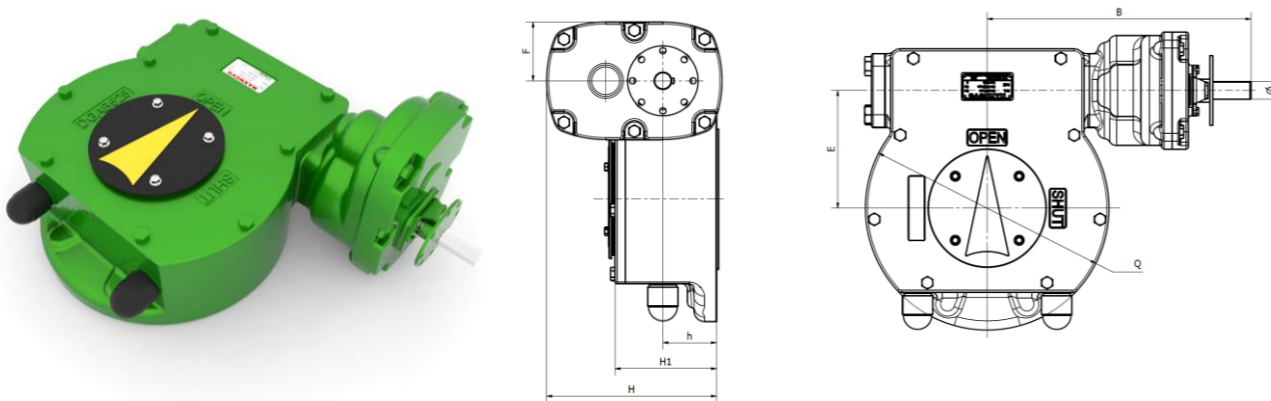
### DGAB24 - DGAB36 - DGAB41 - DGAB47 - DGAB68



### DGAB68B - DGAB178 - DGAB275



### DGAB323 - DGAB525 - DGAB664/B - DGAB1086/B/C



# DGAB Series

## Quarter Turn Gearbox – Complete Model List

- Output torque up to 58.000 Nm
- IP67 and IP68 available as option
- Easy to install and operate, maintenance free
- Ductile Iron housing, marinated duty option available on request
- Accessories available on request: Limit Switch, Locking Device, Chainwheels and Interlock

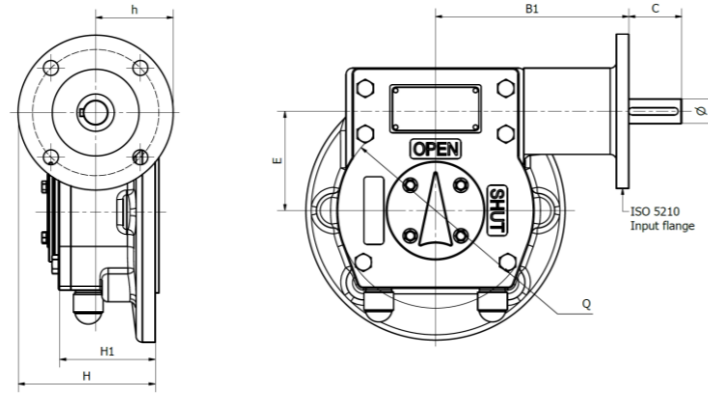
Model	ISO 5211 Output flange - Performance data							Outline dimensions									
	Flange Type/ External diameter	Ratio	Input torque	Maximum output torque	Mechanical Advantage +10%	Maximum stem shaft bore d	Maximum stem Height H1	E	Φ	B	F	H	h	Q	L	Handwheel diameter	Weight
			Nm	Nm		mm	mm										
DGAB24	F07/90 F10/125	24:1	56	400	7,2	28	61	44,5	15	144	30	71	31	91	-	250	4
DGAB36	F10/125 F12/150	36:1	68	750	11	35	73	61,5	18	154	31	83	41	121	-	320	6
DGAB41	F10/175 F12/175 F14/175 F16/210	41:1	102	1300	12,7	45	82	80,5	20	181	35	92	48	160	-	360	11
DGAB47	F12/175 F14/175 F16/210	47:1	125	1800	14,4	50	88	89,5	20	181	37,5	98	54	178	-	460	12
DGAB68	F14/210 F16/210 F20/255 F25/300	68:1	158	3000	19	70	99	126	25	200	50	109,5	59	245	-	600	24
DGAB68B	F14/210 F16/210 F20/255 F25/300	136:1	100	3800	38	70	99	126	25	263	50	154	104	245	47,5	460	28
DGAB178	F16/210 F25/300	178:1	135	6500	52	75	117	126	25	296	68	178,5	128,5	248	68	460	36
DGAB275	F25/300 F30/350	275:1	110	8500	77	95	137	138	25	318	92,5	209	159	264	92,5	600	63
DGAB323	F25/350 F30/350	323:1	123	11000	89	100	136	154,5	25	346	68,5	206,5	69	300	69	600	73
DGAB525	F25/350 F30/350	538:1	114	17000	149	110	148	169	25	379	84	241	76	350	84	600	89
DGAB664	F30/415 F35/415 F40/475	698:1	145	28000	193	130	178	230	25	417	90	272	94	468	90	600	146
DGAB664B	F30/415 F35/415 F40/475	1302:1	120	38000	316,7	130	178	230	30	454	150	374	94	468	139	600	175
DGAB1086	F35/475 F40/475 F48/560	1086:1	155	42000	271	160	201	276,5	30	472	116	342	106	559	116	600	229
DGAB1086B	F35/475 F40/475 F48/560	1258:1	142	48000	338	160	201	276,5	30	472	116	342	106	559	116	600	229
DGAB1086C	F35/475 F40/475 F48/560	1701:1	136	58000	427	160	201	276,5	30	525	162	410	106	559	151	600	260

# DGAB D Series

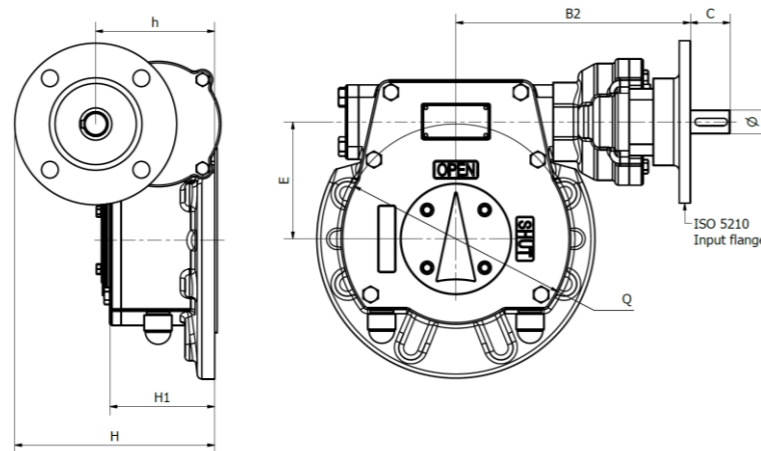
## Quarter Turn Gearbox for Automation

Heavy-duty part-turn gearboxes suitable for ball, butterfly, plug valves serving oil & gas, water, power, chemical and demanding industrial application.

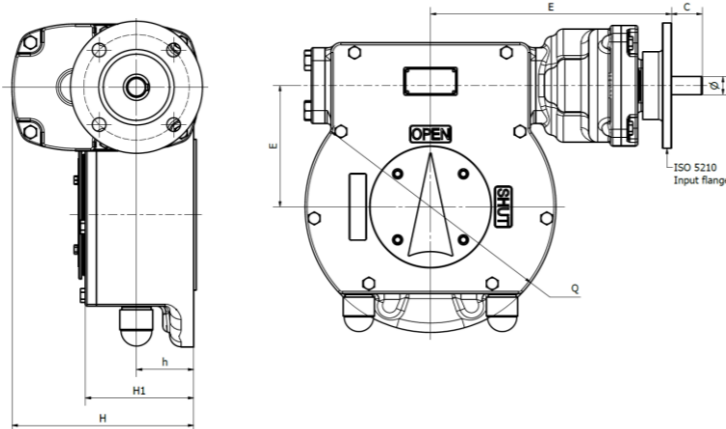
### DGAB24D – DGAB68D



### DGAB68BD - DGAB178D - DGAB275D



### DGAB323D - DGAB525D - DGAB664/BD - DGAB1086/B/CD



# DGAB D Series

## Quarter Turn Gearbox– Complete Model List

- Output torque up to 49300 Nm
- IP67 and IP68 available as option
- Easy to install and operate, maintenance free
- Ductile Iron housing, marinated duty option available on request
- Customized gear ratios available upon request

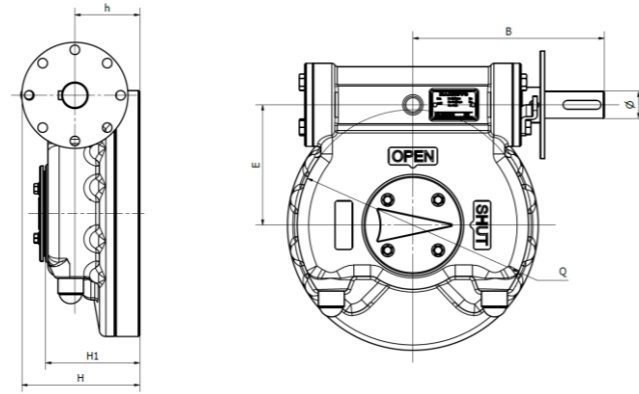
Model	Flange Type / External diameter	Ratio	ISO 5211 Output flange - Performance data						Input flange size ISO 5210					Outline dimensions			
			Input torque Nm	Maximum output torque Nm	Mechanical Advantage +10%	Maximum stem shaft bore d mm	Maximum stem Height H1 mm	E mm	Flange type	Ø mm	C mm	B1 mm	B2 mm	B3 mm	H mm	h mm	Q mm
DGAB24D	F07/90 F10/125	24:1	45	340	7,2	28	61	44,5	F10	15	38	106			93,5	31	91
DGAB36D	F10/125 F12/150	36:1	55	640	11	35	73	61,5	F10	18	37,5	116			103,5	41	121
DGAB41D	F10/175 F12/175 F14/175 F16/210	41:1	87	1100	12,7	45	82	80,5	F10 F14	20	35,5	145,5			110,5	48	160
DGAB47D	F12/175 F14/175 F16/210	47:1	100	1560	14,4	50	88	89,5	F10 F14	20	35,5	145,5			116,5 141,5	54	178
DGAB68D	F14/210 F16/210 F20/255 F25/300	68:1	140	3230	19	70	99	126	F14	25	45	168			136,5	59	245
		136:1	78		34				F10	25	43		220		166,5	104	
DGAB178D	F16/210 F25/300	51:1	355	5550	15,5	75	117	126	F14 F16	30	45	195			148,5 166	61	248
		178:1	103		53				F10 F14	25	43	253	253		191 216	128,5	
DGAB275D	F25/300 F30/350	55:1	487	7250	15,4	95	137	138	F16	35	53	239			174	69	264
		275:1	95		77				F10 F14	25	43			275	221,5 246,5	159	
DGAB323D	F25/350 F30/350	51:1	685	9350	14,3	100	136	154,5	F16 F25	35	53	237			174 219	69	300
		114:1	234		42				F14	30	45		291		225,5	138	
		323:1	109		90				F10 F14	25	43			303	202 202	69	
DGAB525D	F25/350 F30/350	46:1	1103	14450	13,6	110	148	169	F25	45	68	237			226	76	350
		145:1	338		40				F14 F16	35	45		324		244,5 262	157	
		538:1	102		147				F10 F14	25	43			336	241 241	76	
DGAB664D	F30/415 F35/415 F40/475	64:1	1223	23800	18	130	178	230	F30	50	75	279			269	94	468
		182:1	440		50				F16	35	53		392		287	182	
		698:1	117		188				F10 F14	25	43			374	272 272	94	
DGAB664BD	F30/415 F35/415 F40/475	54:1	2318	32300	13,1	130	178	230	F30	55	83	299			269	94	468
		228:1	549		55				F16	45	68		429		287	182	
		1303:1	96		317				F10 F14	30	43			412	272 272	94	
DGAB1086D	F35/475 F40/475 F48/560	67:1	1778	35700	18	160	201	276,5	F30	55	98	339			281	106	559
		268:1	445		72				F16	35	53		447		331	226	
		1086:1	110		392				F10 F14	30	43			429	342	106	
DGAB1086BD	F35/475 F40/475 F48/560	67:1	2328	40800	18	160	201	276,5	F35	65	98	339			314	106	559
		290:1	536		78				F16	45	68		447		331	226	
		1258:1	124		339				F10 F14	30	43			429	342	106	
DGAB1086CD	F35/475 F40/475 F48/560	58:1	3196	49300	14,5	160	201	276,5	F35	65	98	339			314	106	559
		271:1	684		68				F16	45	68		447		331	226	
		1701:1	109		427				F10 F14	30	43			429	342	106	

# D6 Series

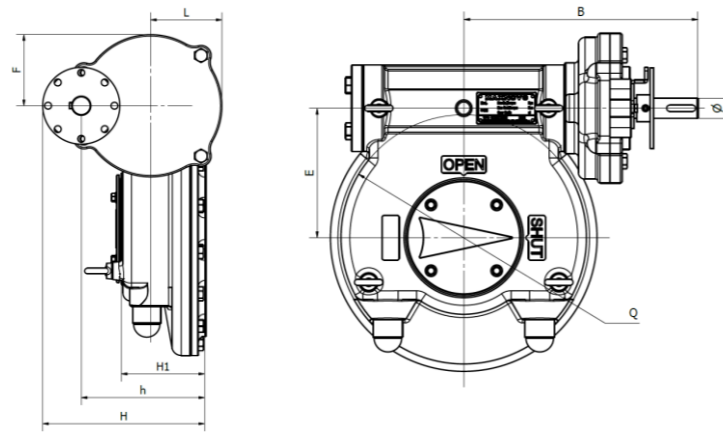
## Quarter Turn Gearbox

Heavy-duty part-turn gearboxes suitable for ball, butterfly, plug valves serving oil & gas, water, power, chemical and demanding industrial application.

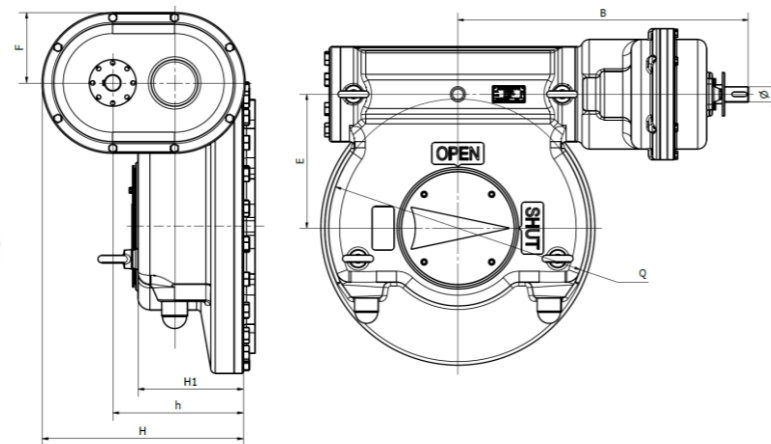
### D603 – D604A



### D604 – D605 – D606 – D607/A – D608



### FROM D609 TO D618



# D6 Series

## Quarter Turn Gearbox – Complete Model List

- Output torque up to 1.000.000 Nm
- IP67 and IP68 available as option
- Easy to install and operate, maintenance free
- Ductile iron / Carbon Steel / Steel SS316 / Low Temperature Carbon Steel housing
- Accessories available on request: Limit Switch, Locking Device, Chainwheels and Interlock

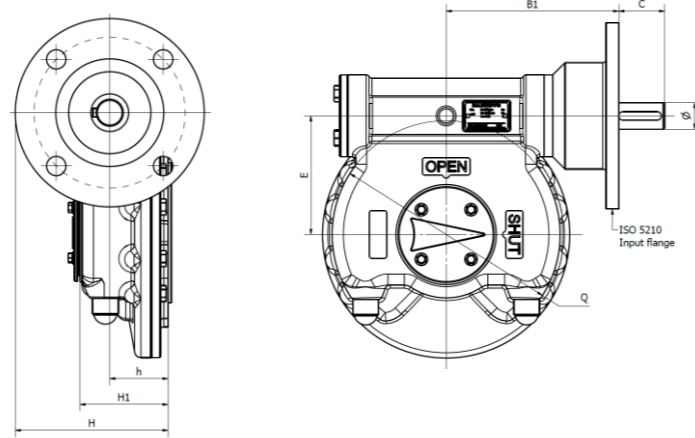
Model	ISO 5211 Output flangem performance data							Outline dimensions								
	Flange Type / External diameter	Ratio	Input torque	Maximum output torque	Mechanical Advnatage +10%	Maximum stem shaft bore d	Maximum stem Height H1	E	Φ	B	F	H	h	Q	L	Weight
			Nm	Nm		mm	mm									
D603	F12/210 F14/210 F16/210	60:1	133	2000	15	50	86	111,5	25	177	50	108	57	214	/	18,3
D604A	F14/255 F16/255 F20/300 F25/300	80:1	150	3000	20	70	110	145	25	203	50	125	75	273	/	38
D604	F14/255 F16/255 F20/300 F25/300	160:1	114	4500	39,4	70	110	145	25	277	59	170	120	273	59	30
D605	F16/255 F20/300 F25/300	335:1	100	8500	85	80	112	160	25	290	92,5	212	162	304	92,5	54
D606	F25/350 F30/350	729:1	80	15000	188	100	137	187,5	30	377	100	291	89	358	100	107
D607A	F25/350 F30/350	648:1	130	22000	170	120	150	202	30	401	100	302	97	384	100	136
D607	F25/350 F30/350	852:1	140	30000	214	120	150	202	30	406	115	329	97	384	115	124
D608	F30/415 F35/415	1303:1	117	42000	359	150	184	226	30	460	150	408	128	430	139	198
D609	F30/475 F35/475 F40/475	1584:1	125	55000	440	170	198	254	30	509	162	444	140	491	151	270
D610	F35/475 F40/475	2080:1	136	78000	573	190	240	279	35	633	145	429	284	536	145	353
D611	F35/560 F40/560 F48/560	2662:1	135	100000	741	190	258	308	35	668	151	455	304	594	151	430
D612	F48/560 F60/686	4354:1	124	140000	1129	240	281	380	35	690,5	192	438	399	722	227	680
D613	F48/560 F60/686	5526:1	125	180000	1440	280	321	450	35	755	254	488	444	828	254	1046
D614	F60/686 F80/900	12783:1	101	300000	2976	320	325	548	25	803,5	255,5	582,5	435	1019	216	1800
D615	F80/900 F100/1200	10852:1	163	450000	2757	400	370	640	35	1072	274	508	387	1200	274	2500
D616	F80/900 F100/1200	16755:1	143	600000	4196	400	436	688	35	1095	274	543	269	1282	274	2800
D617	F80/900 F100/1200	26518:1	120	800000	6667	400	504	705	35	1344	360	674	314	1316	360	3950
D618	F80/900 F100/1200	29262:1	143	1000000	6993	400	540	780	35	1394	360	692	332	1440	360	4750

# D6 D Series

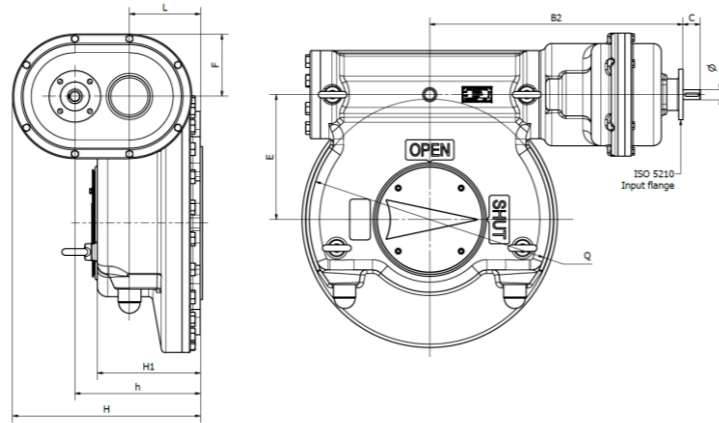
## Quarter Turn Gearbox for Automation

Heavy-duty part-turn gearboxes suitable for ball, butterfly, plug valves serving oil & gas, water, power, chemical and demanding industrial application.

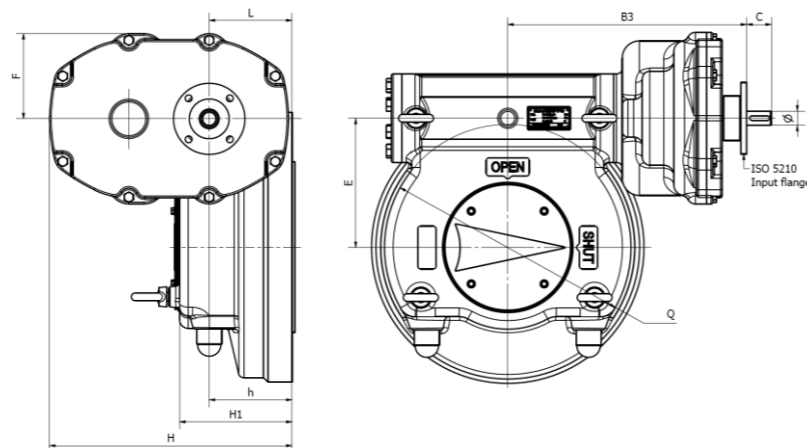
### D603D – D604D



### D604D – D605D – D606D – D607/AD – D608D



### FROM D609D TO D615D



# D6 D Series

## Quarter Turn Gearbox for Automation – Complete Model List

- Output torque up to 850.000 Nm
- IP67 and IP68 available as option
- Easy to install and operate, maintenance free
- Ductile iron / Carbon Steel / Steel SS316 / Low Temperature Carbon Steel housing

Model	Flange Type / External diameter	Ratio	ISO 5211 Output flange - Performance data						Input flange size ISO 5210					Outline dimensions			
			Input torque Nm	Maximum output torque Nm	Mechanical Advnatage +10%	Maximum stem shaft bore d mm	Maximum stem Height H1 mm	E mm	Flange type	Ø mm	C mm	B1 mm	B2 mm	B3 mm	H mm	h mm	Q mm
D603D	F12/210 F14/210 F16/210	60:1	113	1700	15	50	86	111,5	F10 F14	25 43	43 162			119,5 144,5	57	214	
D604D	F14/255 F16/255 F20/300 F25/300	80:1	191	3825	20	70	110	145	F14	25	43	184		162,5	75	273	
		160:1	97		39,4				F10	25	43		234	182,5	120		
D605D	F14/255 F16/255 F20/300 F25/300	67:1	425	7225	17	80	112	160	F16	35	53	195		177	72	304	
		201:1	148		48,9				F10	25	43		247	249,5	162		
		335:1	85		85				F10	25	43		247	249,5	162		
D606D	F25/350 F30/350	63:1	787	12750	16,2	100	137	187,5	F16 F25	50 75	75 245			194 239	89	358	
		189:1	266		48				F14	30	45		321	278,5	191		
		729:1	68		188				F10	30	43		334	291	89		
D607AD	F25/350 F30/350	56:1	1281	18700	14,6	120	150	202	F30	50	75	257		272	97	384	
		168:1	425		44				F16	40	45		345	317	199		
		648:1	111		169				F10	25	43		358	329	97		
D607D	F25/350 F30/350	56:1	1809	25500	14,1	120	150	202	F30	50	75	257		272	97	384	
		186:1	543		47				F16	40	60		382	317	214		
		852:1	119		214				F10	25	43		363	329	97		
D608D	F30/415 F35/415	54:1	2412	35700	14,8	150	184	226	F30	65	98	300		303	128	430	
		228:1	567		63				F16	45	68		435	374	269		
		1303:1	99		359				F10	25	43		417	408	128		
D609D	F30/475 F35/475 F40/475	54:1	3117	46750	15	170	198	254	F35	65	98	328		348	140	491	
		252:1	668		70				F25	45	68		482,5	443	293		
		1584:1	106		440				F10	25	43		465	444	140		
D610D	F35/475 F40/475	52:1	4636	66300	14,3	190	240	279	F35	70	105	360		366	158	536	
		416:1	577		115				F16	45	68		528	429	158		
		2080:1	116		573				F10	25	43		590	429	284		
D611D	F35/560 F40/560 F48/560	52:1	5862	85000	14,5	190	258	308	F40	80	120	380		410	172	594	
		503:1	607		140				F16	45	68		563	455	172		
		2662:1	115		741				F10	25	43		625	455	304		
D612D	F48/560 F60/686	64:1	7169	119000	16,6	240	281	380	F40	95	143	411		438	183	722	
		316:1	1451		82				F30	50	75		586	358	183		
		4354:1	105		1129				F14	35	43		648	429	336		
D613D	F48/560 F60/686	61:1	9684	153000	15,8	280	321	450	F40	110	165	476		441	204	828	
		434:1	1366		112				F30	50	75		661,5	379	204		
		5526:1	106		1440				F14	35	43		712	462	384		
D614D	F60/686 F80/900	64:1	15938	255000	16	320	325	548	F48	120	180	500		485	205	1020	
		316:1	3228		79				F35	80	120		805	461	205		
		2530:1	403		632				F14	35	43		875	522	435		
		12783:1	86		2965				F10	25	41		982	522	435		
D615D	F80/900 F100/1200	66:1	23182	382500	16,5	400	370	640	F60	150	225	620		577	234	1200	
		232:1	6595		58				F40	100	150		940	508	234		
		1147:1	1333		287				F30	50	75		980	508	234		
		10852:1	141		2707				F14	35	43		1029	508	387		
D616D	F80/900 F100/1200	72:1	25527	510000	20	400	436	688	To be requested							1282	
		253:1	7640		67												
		1804:1	1129		452												
		16755:1	122		4196												
D617D	F80/900 F100/1200	58:1	39982	680000	17	400	504	705	To be requested							1316	
		161:1	15136		45												
		567:1	4530		150												
		2803:1	965		705												
		26518:1	102		6667												
D618D	F80/900 F100/1200	64:1	47648	850000	17,8	400	540	780	To be requested							1440	
		178:1	18040		47												
		626:1	5400		157												
		3093:1	1150		739												
		29262:1	122		6993												

# CR – CRS Series

## Bevel Gearbox

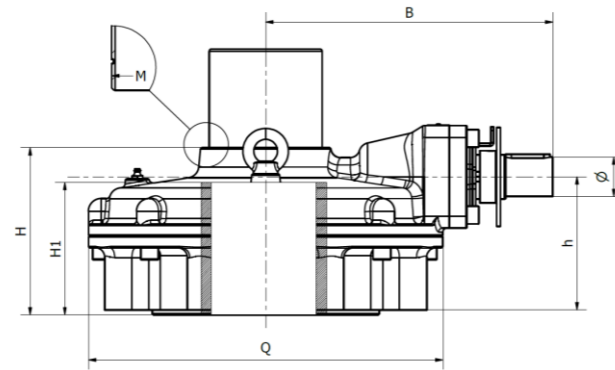
Heavy-duty multi-turn gearboxes suitable for sluice gate, gate valves, globe and pinch valves serving oil & gas, water, power, chemical and demanding industrial application.

# CR – CRS Series

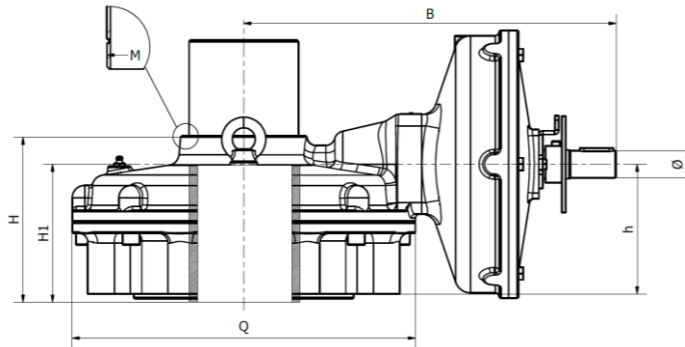
## Bevel Gearbox – Complete Model List

- Output torque up to 70.000 Nm and Thrust Capacity up to 7200 kN
- Easy to install and operate, maintenance free
- Ductile Iron / Carbon Steel / Stainless Steel / Low Temperature Carbon Steel
- Handwheel operated or motorizable output flange acc. to ISO 5210
- Accessories available on request: Position indicator, Plates, Shafts, Locking Device, Chainwheels and Interlock

CR Series



CR-S Series



Model	Flange	ISO 5211 Output flange - Performance data										Outline dimensions										Weight (kg)						
		Maximum stem bore (mm)		Ratio		Mechanical Advnatage +10%		Input torque (Nm)		Maximum output torque (Nm)		Maximum Thrust (kN)		Q (mm)		H1 (mm)		H (mm)		h (mm)			B (mm)		Φ (mm)		M (mm)	
		ZN	ZQ	N	ZN-ZQ	N	ZN-ZQ	N	ZN-ZQ	N	ZN-ZQ	N	ZN-ZQ	N	ZN	ZQ	N	ZN-ZQ	N	ZN-ZQ	N		ZN-ZQ	N	ZN-ZQ	N	ZN-ZQ	N
CR01	F10 F12	26	36	45	2,7	4:1	2,2	121	141	260	110	145	167	33	50,5	80	88,5	100	65,5	160	23	25	M33.5x2					8,5
CR02	F10 F12 F14	26	36	45	3,1:1	4:1	2,5	182	141	450	160	165	167	33	57	78	88,5	100	73	68,5	172	194	23	25	M42x2	M60x2	11,5	
CR03	F10 F12 F14 F16	30	44	52	3,6	4:1	2,8	245	221	696	200	240	175	182	42	66	88	91,5	110	78	78	180	210	23	25	M60x2		14,5
CR04	F12 F14 F16 F20	40	52	65	3,9	4:1	3,1	320	312	1002	220	280		46	74	90	103	118	87	87	209,5	244	28	25	M60x2	M88.5x2	22	
CR05	F14 F16 F20 F25	45	62	52	4,4		3,5	459		1602	240	320	237	56	85	56	110,5	107,5	94,5	88,5			28		M76x2	M88.5x2	31	
CR05S	F14 F16 F20 F25	45	62	52	22,2		17,4	92		1602	240	320	237	56	85	56	110,5	107,5	94,5	88,5			28		M76x2	M88.5x2	35	
CR05.5	F14 F16 F25 F30	50	72	60	4,6		3,7	590		2145	360	400	270	66	91	66	116,5	117,5	105	95			35		M88.5x2		43	
CR05.5S	F14 F16 F25 F30	50	72	60	22,8		16,4	132		2145	360	400	270	66	91	66	116,5	117,5	105	95			28		M88.5x2		53	
CR06	F16 F25 F30	55	80	60	4,7		3,8	798		3000	480	500	292	71	97	76	120,5	133,5	109	101			35		M88.5x2		41,5	
CR06S	F16 F25 F30	55	80	60	23,8		17,1	172		3000	480	500	292	71	97	76	120,5	133,5	109	101			28		M88.5x2		52	
CR07	F25 F30 F35	64	90	74	5,3		4,2	980		4155	500	600	328	88	110	96	139,5	155,5	122	111			35		M114x2		61	
CR07S	F25 F30 F35	64	90	74	26,8		19,3	211		4155	500	600	328	88	110	96	139,5	155,5	122	111			28		M114x2		70,5	
CR08	F25 F30 F35	75	105	92	5,8		4,6	1190		5500	660	900	359	100	131	116	164,5	179,5	135	123			40		M114x2	M139.5x2	74,5	
CR08S	F25 F30 F35	75	105	92	42		30,2	178		5500	660	900	359	100	131	116	164,5	179,5	135	123			28		M114x2	M139.5x2	96,5	
CR09	F25 F30 F40	97	130	112	6,3		5,1	1945		9854	850	950	447	124	165	136	176	202,5	154	134			40		M164.5x2	M164.5x2	118	
CR09S	F25 F30 F35 F40	97	130	112	46		33,1	291		9854	850	950	447	124	165	136	176	202,5	154	134			28		M164.5x2	M164.5x2	140	
CR10S	F30 F35 F40 F48	110	160	122	60,7		43,7	320		14310	2200	1500	488	159	194	162	220	246,5	193	162			28		M218.5x2	M218.5x2	225	
CR11S	F40 F48 F60			140		238	190,4		132	25000		2000	632		176		270,5		190	608			28		M218.5x2		411	
CR12S	F48 F60 F80			180		120 606	460/96		108,5/52 1	50000		6800	763		264		420		303	929			25		M297x3		840	
CR13S	F48 F60 F80			220		175 886	672/140		104/500	70000		10000	853		294		445		337	1004			25		M375x3		1317	

# CR – CRS Series

## Drive Sleeve Configuration



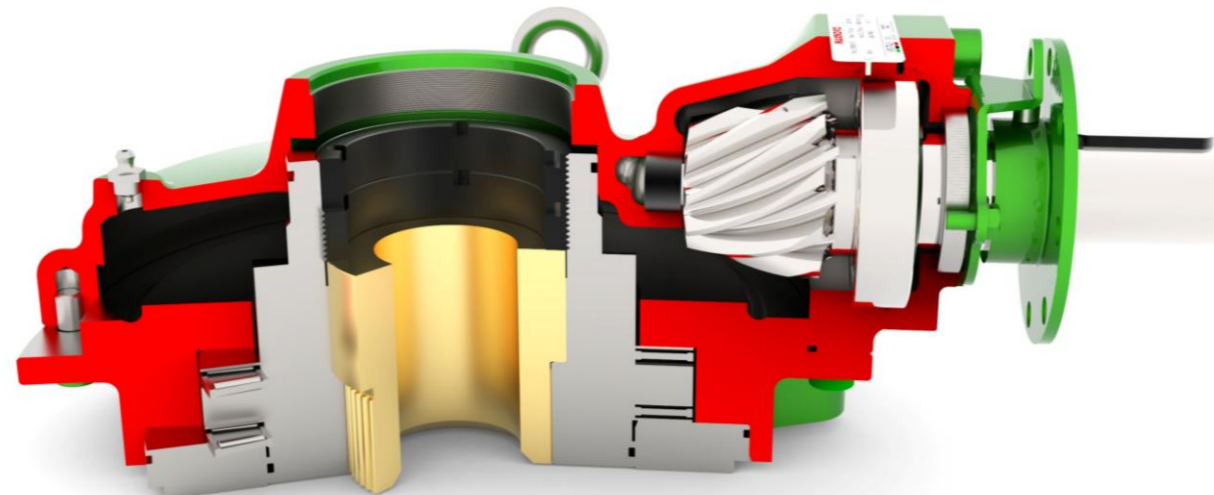
### ZN Version

- Standard gearbox housing (same of ZQ Type)
- Removable nut in Bronze-Alluminium
- Drive sleeve in ductile iron
- Cost competitive design



### ZQ Version

- Standard gearbox housing (same of ZQ Type)
- Not-Removable drive sleeve in Bronze-Alluminium
- Maximum stem acceptance wider compared to other version



### N Version

- Oversized gearbox housing
- Removable nut in Bronze-Alluminium
- Stem bore  $\varnothing$  wider instead of ZN Type
- Designed to allow high thrust's

# Handwheel table

Material and option available

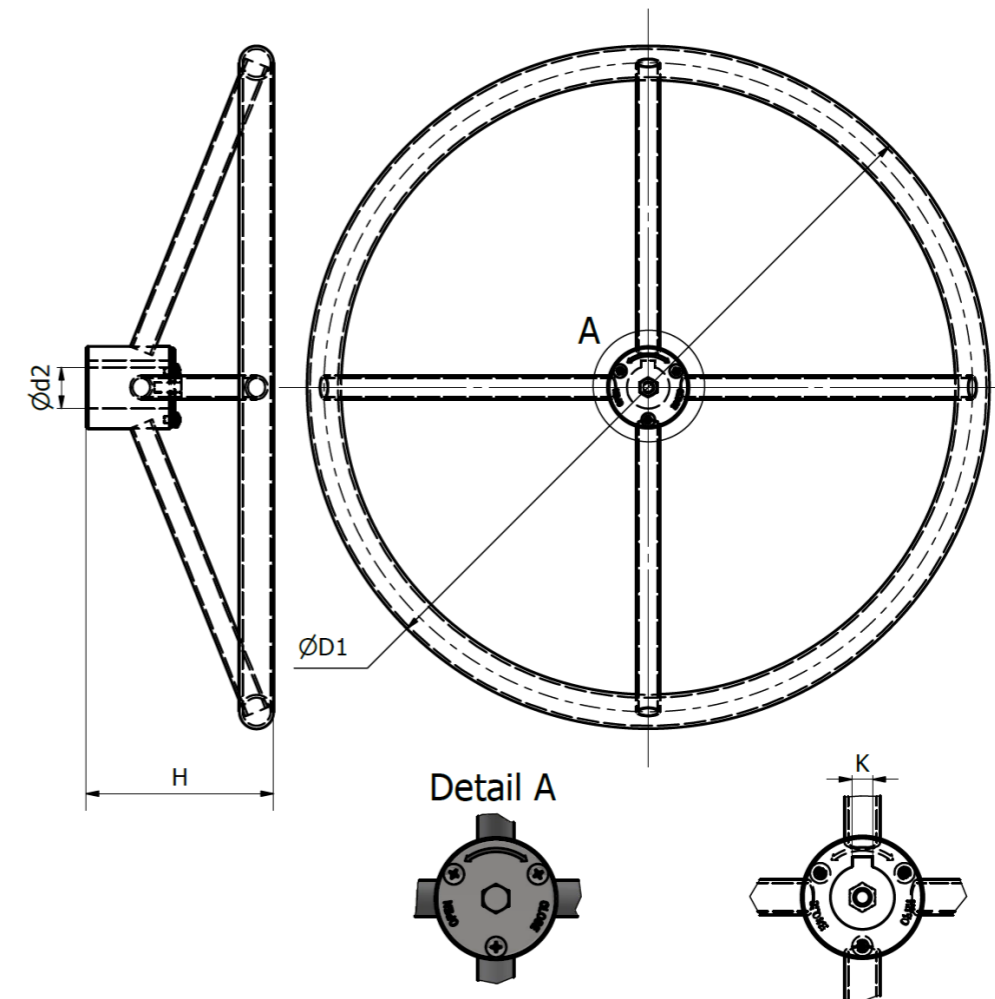
Dimension – Ø Wheel	
H	ØD1
85	Ø200
85	Ø250
90	Ø280
90	Ø300
100	Ø320
110	Ø360
110	Ø400
130	Ø460
130	Ø500
150	Ø600
150	Ø700
150	Ø750
180	Ø800

Material	
Code	Material
A1	TUBE CARBON STEEL RAL 9005
A2	TUBE CARBON STEEL RAL 3020
A3	SOLID CARBON STEEL 9005
A4	TUBE CARBON STEEL RAL 9005 AND FLAT DESIGN
B2	TUBE SS 316
B3	SOLID SS 316
B4	SOLID SS 316 AND FLAT DESIGN
B5	TUBE SS 316 AND FLAT DESIGN

Gear Type	
Gear	Type
QT	QUARTER TURN
MT	MULTI TURN

Option	
Code	Option
0	
S	SQUARE NUT 2"
H	HANDLE
D	ADDITIONAL RETENTION SCREW (IOGP)

Shaft	Key
Ød2 - +0,7/-0	K - +0,5/-0
15	5
18	6
20	8
25	10
30	12
35	
40	



## Note:

The handwheel diameter of 200-250-300-400-500-600-700 are available in stock. Dimension and weight without tolerance are ±3%

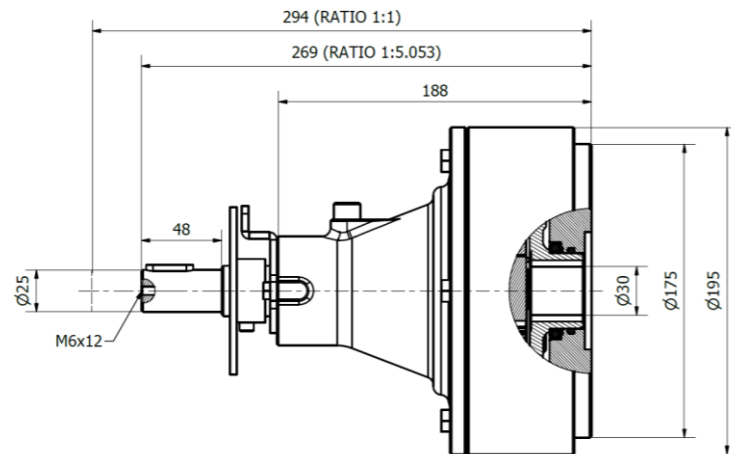
# DSG - Dual Speed Gear

Maxnovo Dual Speed Ratio is a gear that allows to reduce the number of rotations to open and close the valve reducing the operating time on manual valve applications. DSG speed ratio can be easily switched by pushing or pulling the input shaft. The high-speed ratio is used for high torque when the valve is opened (BTO) and finally closed (ETC) to achieve easy opening and closing action without applying excessive force at the handwheel. The low-speed ratio is used to quickly open or close the valve during the low torque (running) travel.

- Pull the input shaft for Ratio 1:1
- Push the input shaft for Ratio 5.053:1
- Locking device as standard
- IP67 Enclosure as standard
- Easy to install and operate, maintenance free
- Temperature -20 to 80 °C

## Technical data

Input torque	200Nm
Maximum output torque	960Nm
Gear Ratio	1:1 & 5.053:1
Mechanical Advnatage for Higher Ratio	4.8 ± 5%



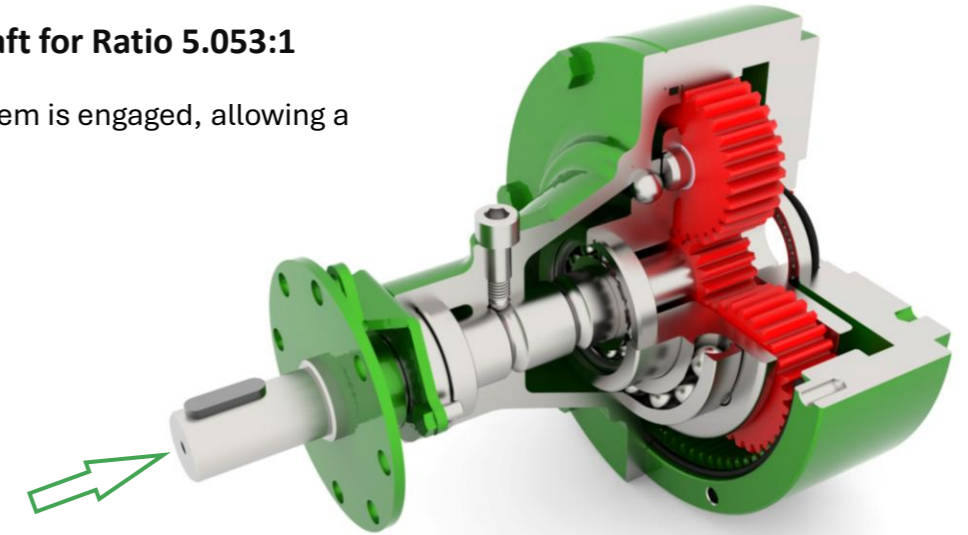
## Material List

No.	Component	Material	Standard
1	Body	Carbon Steel	ASTM 216 WCB
2	Coverplate	Carbon Steel	ASTM 216 WCB
3	Input Shaft	Steinless Steel	ASTM A270 420
4	Planetary wheel	Alloy Steel	ASTM 5140
5	Gear Ring	Carbon Steel	ASTM A216 WCB
6	Planetary Carrier	ductile iron	ASTM A536 65-45-12
7	Bearing	Carbon Steel	-
8	O-ring Seal	NBR	-
9	Screws	Carbon Steel	Cl. 8.8

# DSG - How it works

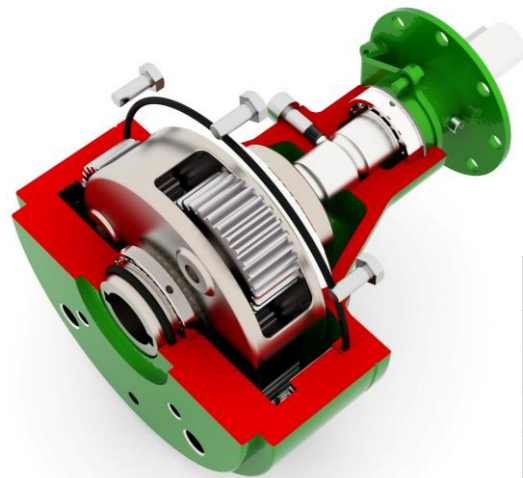
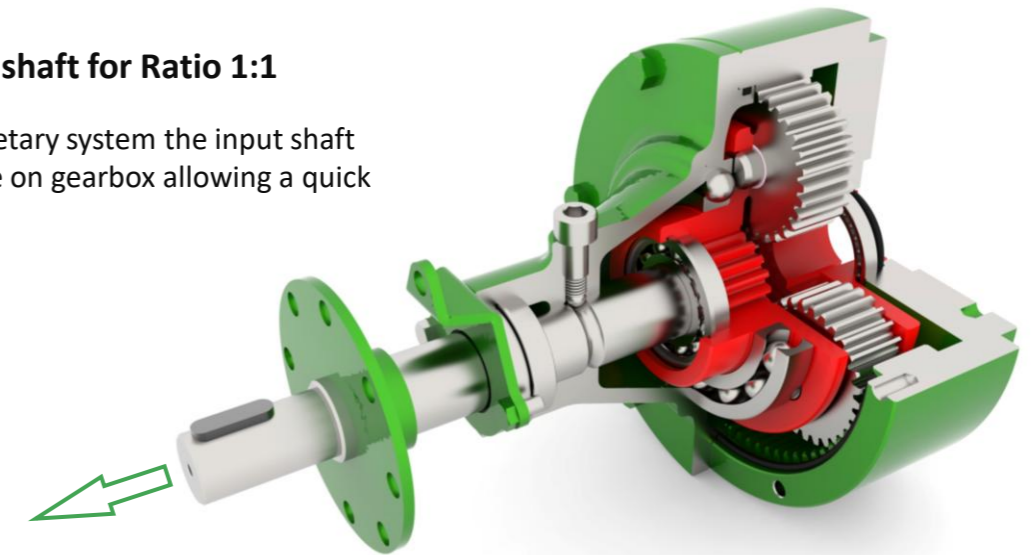
## ▪ Push the input shaft for Ratio 5.053:1

The planetary gear system is engaged, allowing a easy operation



## ▪ Pull the input shaft for Ratio 1:1

Disengage the planetary system the input shaft became direct drive on gearbox allowing a quick operation



# G-90 – Mieter Gear

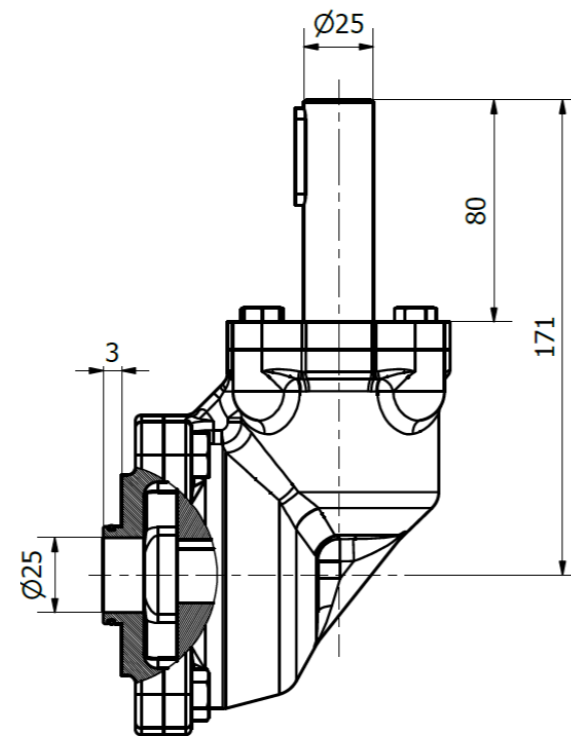
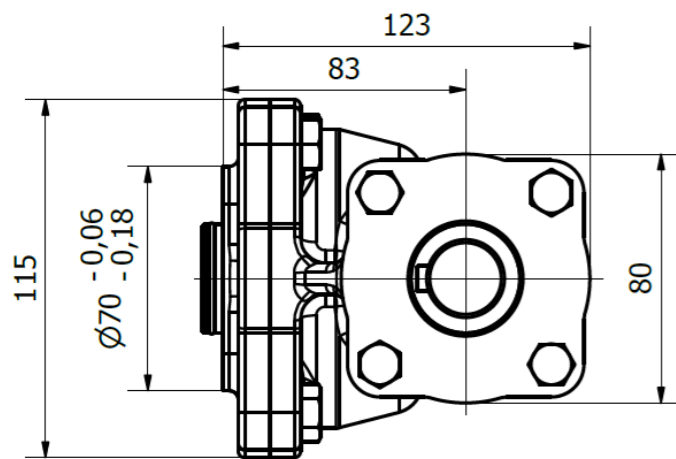
Maxnovo G-90 is a right-angle gearbox that can be mounted on quarter-turn or multiturn gearboxes to achieve the desired input shaft angle.

The G-90 is commonly used for valves installed underground or buried and it is generally operated by an extension rod or extension tube that can be supplied as an option.

- Ratio 1.278:1
- Mechanical Advantage  $1 \pm 5\%$
- Input Flange ISO 5210 F10 or F14 as an option
- IP67 Enclosure as standard
- Easy to install and operate, maintenance free
- Temperature -20 to 80 °C

## Technical data

Input torque	200Nm
Maximum output torque	200Nm
Gear Ratio	1.278:1
Mechanical Advnatage	$1 \pm 5\%$



# G-90 – Configuration



G-90



G-90D

With automation flange

## Material List

No.	Component	Material	Standard
1	Body	Ductile Iron	ASMT A536 65-45-12
2	Cover Plate	Ductile Iron	ASMT A536 65-45-12
3	Base Plate	Ductile Iron	ASMT A536 65-45-12
4	Input Shaft	Stainless Steel	ASTM A276 420
5	Gear	Alloy Steel	ASTM 5140
6	Input Falnge	Carbon Steel	ASTM A216 WCB
7	Bearing	Carbon Steel	-
8	O-ring Seal	NBR	-
9	Screws	Carbon Steel	Cl. 8.8



# CRP – CRDP Series

Bevel Gearbox double input

## Introducing the Maxnovo Bevel Gearbox

Engineered to deliver precision, reliability, and seamless integration, the new **Maxnovo** Bevel Gearbox has been specifically designed to meet the needs of customers requiring synchronized motion of two gears driven either manually via handwheel or using the **DP** version through an electric actuator.

Developed with the water-management sector in mind, this solution is particularly suited for sluiceway and handling systems, where the synchronized movement of two salient stems is essential for efficient and controlled operation.

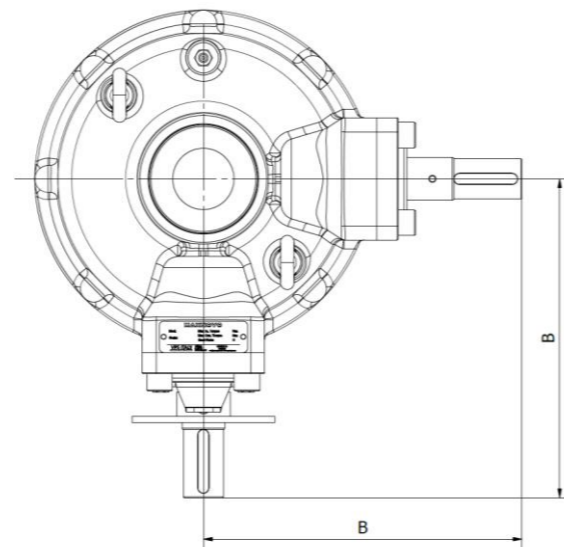
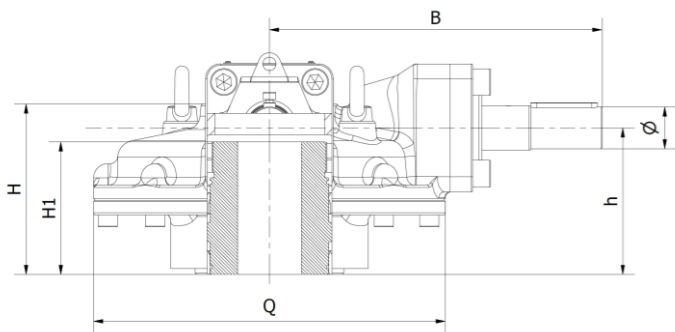
This new variant is compatible across the entire **Maxnovo CR** gear series, ensuring broad applicability and easy implementation within existing systems.



CRP Series



CRDP Series



# CRP – CRDP Series

Bevel Gearbox Double input – Complete Model List

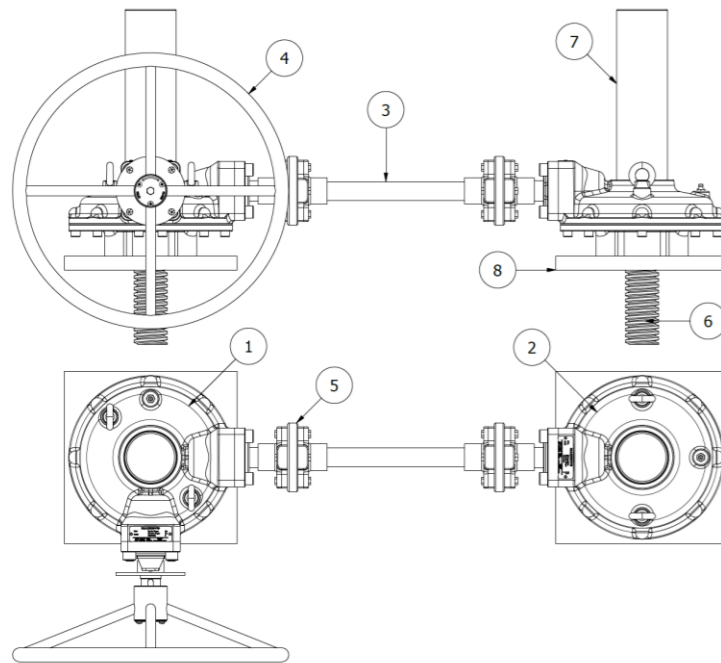
- Output torque up to 70.000 Nm and Thrust Capacity up to 7200 kN
- Easy to install and operate, maintenance free
- Ductile Iron / Carbon Steel / Stainless Steel / Low Temperature Carbon Steel
- Handwheel operated or motorizable output flange acc. to ISO 5210
- Accessories available on request: Position indicator, Plates, Shafts, Locking Device, Chainwheels and Interlock
- For dimensions and drawings out technical dept. can provide all info required

Model	Flange	ISO 5211 Output flange - Performance data												Outline dimensions															
		Maximum stem bore (mm)			Ratio		Mechanical Advantage +10%		Input torque (Nm)		Maximum output torque (Nm)		Maximum Thrust (kN)		Q (mm)		H1 (mm)		H (mm)		h (mm)		B (mm)		Ø (mm)		M (mm)		
		ZN	ZQ	N	ZN-ZQ	N	ZN-ZQ	N	ZN-ZQ	N	ZN-ZQ	N	ZN-ZQ	N	ZN	ZQ	N	ZN-ZQ	N	ZN-ZQ	N	ZN-ZQ	N	ZN-ZQ	N	ZN-ZQ	N	ZN-ZQ	N
CR01P / CR01DP	F10		26		2,7		2,2		121		260		110		167		50,5		80		65,5		160		23		M33.5x2		
	F12																												
CR02P / CR02DP	F10		26	36	45	3,1	4	2,5	3,4	182	141	450	160	200	182	167	33	57	78	88,5	100	73	68,5	172	194	23	25	M42x2	M60x2
	F12																												
	F14																												
CR03P / CR03DP	F10																												
	F12		30	44	52	3,6	4	2,8	3,4	245	221	696	200	240	175	182	42	66	88	91,5	110	78	78	180	210	23	25	M60x2	
	F14																												
	F16																												
CR04P / CR04DP	F12																												
	F14		40	52	65	3,9	4	3,1	3,4	320	312	1002	220	280	210	46	74	90	103	118	87	87	209,5	244	28	25	M60x2	M88.5x2	
	F16																												
	F20																												
CR05P / CR05DP	F14																												
	F16		45	62	52	4,4		3,5		459		1602	240	320	237	56	85	56	110,5	107,5	94,5	88,5		224		28	M76x2	M88.5x2	
	F25																												
CR05.SP / CR05.SDP	F14																												
	F16		50	72	60	4,6		3,7		590		2145	360	400	270	66	91	66	116,5	117,5	105	95		244		35	M88.5x2		
	F30																												
CR06P / CR06DP	F16																												
	F25		55	80	60	4,7		3,8		798		3000	480	500	292	71	97	76	120,5	133,5	109	101		254		35	M88.5x2		
	F30																												

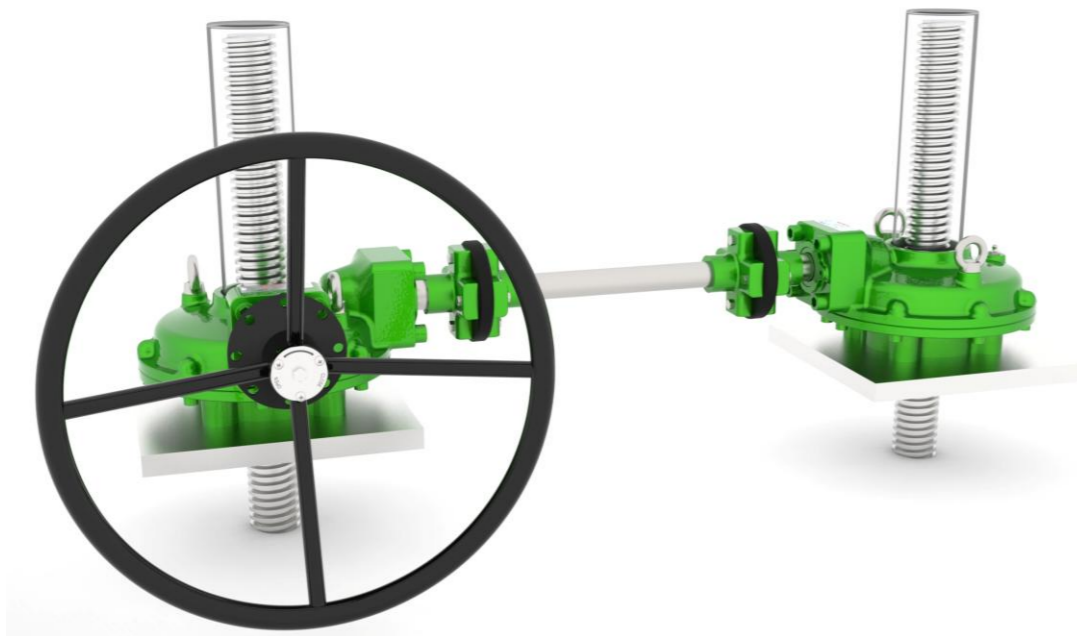
# CRP - CRDP Kit

## Maxnovo complete kit overview

- To support true plug-and-play installation, Maxnovo provides a complete package that includes all necessary components, offering end users a fully integrated and ready-to-use solution.
- Available with automation flange



ITEM LIST		
ITEM	QTY	DESCRIPTION
1	1	CRP - Serie double input
2	1	CR - Serie
3	1	Connecting rod
4	1	Handwheel
5	2	Elastic Joint
6	2	Screw
7	2	Stem cover
8	2	Adaption Flange



# CRP – CRDP - Accessories

Connecting rod	
Item	Dimension
	Ø30x3mm
	Ø38x4mm
	Ø42x2,5mm
	Ø45x2,5mm
	Ø48x4mm

Screw	
Item	Dimension
	TR-30/35x6mm
	TR-40x7mm
	TR-50x8mm
	TR-60x9mm
	TR-70x10mm

Stem cover – Carbon Steel / SS316	
Item	Dimension
	M33,5x2 – h Custom
	M42x2 – h Custom
	M60x2 – h Custom
	M76x2 – h Custom
	M88,5x2 – h Custom

Plates – Carbon Steel / SS316					
Item	L1	L2	ØF	Øf	H
	200	180	F10	12	20
	200	180	F12	14	20
	250	200	F14	18	25
	250	250	F16	22	30
	280	250	F20	18	40
	350	300	F25	18	40
	400	350	F30	22	40

\*All dimension can be customize

# WedgeRock RP Series

While the **WedgeRock** Planetary Gear may look unconventional, you are not likely to find a more efficient, self-locking gear operator on the market. The sliding action of conventional worm gear valve operators typically lose more than 65% of the input torque to friction resulting in heat and wear; inherent in the self-locking function, conventional worm gear operators are less than 35% efficient.

In contrast, **WedgeRock** Planetary Gears provide a rolling action with numerous teeth always in contact and self-centering gear carriages that evenly distribute contact stress resulting in higher efficiencies and an extended, more predictable cycle life – typically providing efficiencies greater than 90%.

Manual or motorized applications, **WedgeRock** has a planetary gear design for every application. From quarter turn to multi-turn, rising stem thrust applications, subsea or topside, **WedgeRock** can provide a robust, compact and efficient planetary operator for your application.

## Planetary Gears:

- Efficient and Compact Design
- High Cycle Life – Load Sharing / Self Centering
- Rolling Rather Than Sliding Action

## Features

**Standard sealing configuration tested to IP68.**

- Dual seals on dynamic ingress points
- All points of ingress O-ring sealed

**Bearings to maximize efficiency.**

- Bronze output bearings
- Rolling element worm bearings

**Self-Locking PolyLock Clutch**

- Patented clutch prevents valve backdriving

**Built with quality materials.**

- Hardened alloy steel gears
- Ductile Iron Housings



# WedgeRock RP Series

## Material table and service condition

Temperature Service Condition				
Service Condition	Seal Material	Lubricant	Min Operating Temp	Max Operating Temp
			F° / °C	F° / °C
Standard service	Buna	Standard Grease	-40 / -40	225 / 107
High-temp service	Viton	High-temp Grease	-15 / -26	400 / 204
Low-temp service	Low Temp Buna	Low-temp Grease	-60 / -51	225 / 107
Compensated Subsea service	Ptfe / Buna	Compensation Fluid	-40 / -40	225 / 107

Standard Component Material Selection For Specified Environments						
Component	Service Condition					
	Standard Pipeline		Offshore	Subsea		District Heating
	Topside	Buried	Platform	Shallow	Compensated	Corrosive
Stop Base	Ductile Iron	Ductile Iron	Ductile Iron	Ductile Iron	Ductile Iron	Bronze
Pr Housing	Ductile Iron	Ductile Iron	Ductile Iron	Ductile Iron	Ductile Iron	Bronze
Output Hub	Ductile Iron	Ductile Iron	Ductile Iron	Ductile Iron	Ductile Iron	Bronze
Planet Gears	Alloy Steel	Alloy Steel	Alloy Steel	Alloy Steel	Alloy Steel	Alloy Steel
Sun Gear	Alloy Steel	Alloy Steel	Alloy Steel	Alloy Steel	Alloy Steel	Alloy Steel
Planet Carrier	Alloy Steel	Alloy Steel	Alloy Steel	Alloy Steel	Alloy Steel	Alloy Steel
Hub Bearings	Brass	Brass	Brass	Brass	Brass	Bronze
Input Shaft	Stainless Steel	Stainless Steel	Super Duplex Stainless Steel	Super Duplex Stainless Steel	Super Duplex Stainless Steel	Super Duplex Stainless Steel
Stops	Alloy Steel	Alloy Steel	Alloy Steel	Alloy Steel	Alloy Steel	Alloy Steel
Jam Nut (S)	Steel	Sealed Steel	Sealed Steel	Sealed Steel	Sealed Steel	Sealed Bronze
Fasteners	Grade 5	Grade 5	316ss	Grade 5 / 316ss	Grade 5 / 316ss	Grade 5 / 316ss
Seals	Buna	Buna	Buna	Ptfe / Buna	Ptfe / Buna	Buna
Lubrication	Grease	Grease	Grease	Grease	Oil	Grease
Finish	Epoxy Primer	Epoxy Primer	Epoxy Primer	Epoxy Primer	Epoxy Primer	N/A

# WedgeRock RP Series

## Planetary Gearbox General Overview Table RP5 to RP12

Model	Performance and specification table																																				
	Stage assembly table	Flange ISO-5211 (max/min)	Input shaft Ø (In / mm)	Output Torque rating In-Lbs (Nm)	Gear ratio :1						Mechanical Advantage ±10%						Input Torque In-Lbs (Nm)						Dimension In / (mm)			Weight LGS / Kg											
					A	B	C	D	E	F	A	B	C	D	E	F	A	B	C	D	E	F	A	B	C												
RP5	F10	1.00 - 1.50	10,000	2,6	3,0	4,2	5,0	6,3	9,0	2,5	2,9	4,1	4,9	6,1	8,7	3,956	3,436	2,455	2,062	1,629	1,145	13,1	10,5	8,4	72												
	F16	25.4 - 38.1	1,130													448	388	277	233	184	129	333	267	213	33												
RP6	F14	1.00 - 1.50	28,000	2,6	3,0	4,2	5,0	6,3	9,0	2,5	2,9	4,1	4,9	6,1	8,7	11,102	6,922	6,873	5,773	4,560	3,207	15,2	13,1	12,0	131												
	F16	25.4 - 38.1	3,164													1,254	1,087	777	652	515	632	386	333	305	59												
RP6+RP5	F14	1.00 - 1.50	28,000	13	15	21	25	32	45	12	14	20	24	30	42	2,289	1,984	1,417	1,190	940	661	16,4	13,8	12,0	142												
	F16	25.4 - 38.1	3,164													259	224	160	135	106	75	417	351	305	64												
RP6H+RP5	F14	1.00 - 1.50	45,000	13	15	21	25	32	45	12	14	20	24	30	42	3,679	3,188	2,277	1,913	1,511	1,063	16,4	13,8	12,0	148												
	F16	25.4 - 38.1	5,085													416	360	257	216	171	120	417	351	305	67												
RP8	F16	1.50 - 2.00	100,000				5,3	6,3	9,0						8,7	20,619	9,772	4,582	18,4	16,9	15,0	268															
	F25	38.1 - 50.80	11,299													2,330	1,104	518	467	429	381	122															
RP8+RP6	F14	1.00 - 1.50	100,000	13	15	21	25	32	45	12	14	20	24	30	42	8,175	7,085	5,061	4,251	3,358	2,362	19,7	18,4	15,0	262												
	F16	25.4 - 38.1	11,299													924	801	572	480	379	267	499	467	381	119												
RP8 + RP6 + RP5	F25	1.00 - 1.50	100,000	65	75	105	125	158	225	59	68	96	114	144	205	1,686	1,461	1,044	877	692	487	21,7	19,1	15,0	265												
	F30	25.4 - 38.1	11,299													190	165	118	99	78	55	551	485	381	120												
RP9	F25	1.50 - 2.00	175,000				5,3	6,3	9,0						8,7	36,082	17,101	8,018																			
	F35	38.1 - 50.80	19,774													4,077	1,932	906																			
RP9 + RP8	F25	1.50 - 2.00	175,000	13	15	21	25	32	45	12	14	20	24	30	42	14,879	12,399	9,300	7,440	5,877	4,133	23,9	22,4	16,8	481												
	F35	38.1 - 50.80	19,774													1,681	1,401	1,051	841	664	467	606,0	568,0	427,0	218												
RP9 + RP8 + RP5	F25	1.00 - 1.50	175,000	82	95	133	158	200	285	75	87	121	144	183	260	2,330	2,019	1,442	1,212	957	673	23,8	21,2	16,8	390												
	F35	25.4 - 38.1	19,774													263	228	163	137	106	76	604	539	427	177												
RP10	F25	1.50 - 2.00	240,000				5,3	6,3	9,0						8,7	49,485	23,452	10,997																			
	F35	38.1 - 50.80	27,119													5,591	2,650	1,243																			
RP10 + RP8	F25	1.50 - 2.00	240,000	13	15	21	25	32	45	12	14	20	24	30	42	20,406	17,005	12,754	10,203	8,059	5,668	27,3	25,8	18,8	660												
	F35	38.1 - 50.80	27,119													2,306	1,921	1,441	1,153	911	640	694,0	656,0	477,0	299												
RP10 + RP8 + RP5	F25	1.00 - 1.50	240,000	117	135	189	225	285	405	107	123	172	205	260	370	2,248	1,948	1,391	1,169	923	649	27,3	24,7	18,8	628												
	F40	25.4 - 38.1	27,119													254	220	157	132	104	73	693	627	477	285												
RP12	F30	1.50 - 2.00	400,000				5,3	6,3	9,0						8,7	82,474	39,087	18,328																			
	F48	38.1 - 50.80	45,198													9,319	4,417	2,071																			
RP12 + RP8	F30	1.50 - 2.00	400,000	13	15	21	25	32	45	12	14	20	24	30	42	34,010	28,342	21,256	17,006	13,432	9,447	27,8	26,3	22,3	832												
	F48	38.1 - 50.80	45,198													3,843	3,202	2,402	1,921	1,518	1,067	705	667	565	377												
RP12 + RP8 + RP6	F30	1.00 - 1.50	400,000	65	75	105	125	158	225	59	68	96	114	144	205	6,743	5,844	4,174	3,506	2,769	1,948	29,0	27,8	22,3	826												
	F48	25.4 - 38.1	45,198													762	660	472	396	313	220	738	706	565	375												
RP12 + RP8 + RP6 + RP5	F30	1.00 - 1.50	400,000	273	315	441	525	665	945	242	279	390	465	588	837	1,655	1,434	1,025	861	680	478	31,1	28,5	22,3	829												
	F48	25.4 - 38.1	45,198													187	162	116	67	77	54	789	724	565	376												
RP14	F35	1.00 - 1.50	750,000				5,3	6,3	9,0						8,7	154,639	73,289	34,364																			
	F60	25.4 - 38.1	84,746													17,473	8,281	3,883																			
RP14 + RP10	F35	AVAILABLE UPON REQUEST	750,000	13	15	21	25	32	45	12	14	20	24	30	42	63,769	53,141	39,855	31,884	25,185	17,714																
	F60	84,746														7,206	6,005	4,503	3,603	2,846	2,002																
RP14 + RP10 + RP6	F35	1.00 - 1.50	750,000	117	135	189	225	285	405	107	123	172	205	260	370	7,024	6,087	4,348	3,652	2,885	2,029	34,1	32,9	27,8	1,403												
	F60	25.4 - 38.1	84,746													791	688	491	413	326	229	867	835	705	636												
RP14 + RP10 + RP6 + RP5	F35	1.00 - 1.50	750,000	411	475	665	791	1002	1424	364	420	588	700	887	1261	2,059	1,784	1,275	1,071	846	595	33,6	36,1	27,8	1,406												
	F60	25.4 - 38.1	84,746													233	202	114	121	96	67	843	918	705	638												
RP18	F48	request	1,350,000				5,3	6,3	9,0						8,7	278,351	131,920	61,856																			
	F60	request	152,542													31,452	14,906	6,989																			
RP18 + RP12	F48	request	1,350,000	13	15	20	25	32	45	12	14	19	24	30	42	114,784	95,653	71,740	57,392	45,333	31,884																
	F60	request	152,542													12,970	10,808	8,106	6,485	5,177	3,603																
RP18 + RP12 + RP8	F48	1.50 - 2.00	1,350,000	113	135	180	225	285	405	103	123	164	205	260	370	13,148	10,957	8,218	6,574	5,193	3,652																
	F60	38.1 - 50.80	152,542													1,486	1,238	929	743	587	413																
RP18 + RP12 + RP8 + RP6	F48	1.00 - 1.50	1,350,000	411	475	665	791	1002	1424	364	420	588	700	887	1261	3,706	3,212	2,294	1,927	1,522	1,071																
	F60	25.4 - 38.1	152,542													419	363	259	218	172	121																
RP24	F48	request	2,250,000				5,3	6,3	9,0						8,7	463,918	219,866	103,093																			
	request	request	254,237													52,420	24,844	11,649																			
RP24 + RP14	F48	request	2,250,000	13	15	20	25	32	45	12	14	19																									

# WedgeRock RW Series

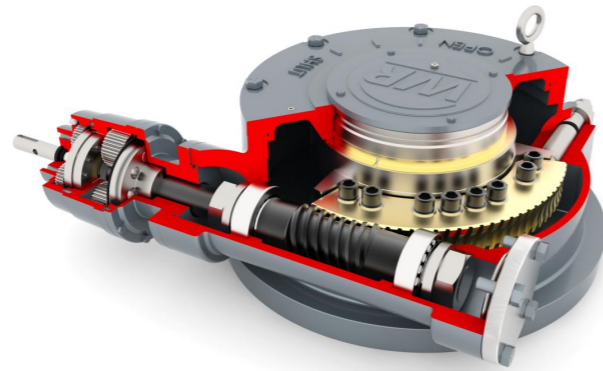
The **WedgeRock** Performance Worm Gear line provides a conventional product with an unconventional advantage.

In performance applications, **WedgeRock** can provide up to 60% reduction in turns to operate over standard worm gears, supporting individual factor specifications for manual applications, or reducing operating times and required actuator size for motorized applications.

Manual or motorized, quarter turn or multi-turn, overrides, subsea or topside – **WedgeRock** has a worm gear design for every application.

## Features:

- Modular design accommodates multiple applications
  - Quarter turn
  - Multi-turn
  - Rising stem
- Input shaft projection parallel or perpendicular to output
- High efficiency and standard efficiency options
- All available ratios are self-locking
- Motorized and manual input options
- Splined drive sleeve available
- Travel indication
- Elastomer seals at all ingress points
- Available for subsea applications
- Application engineered

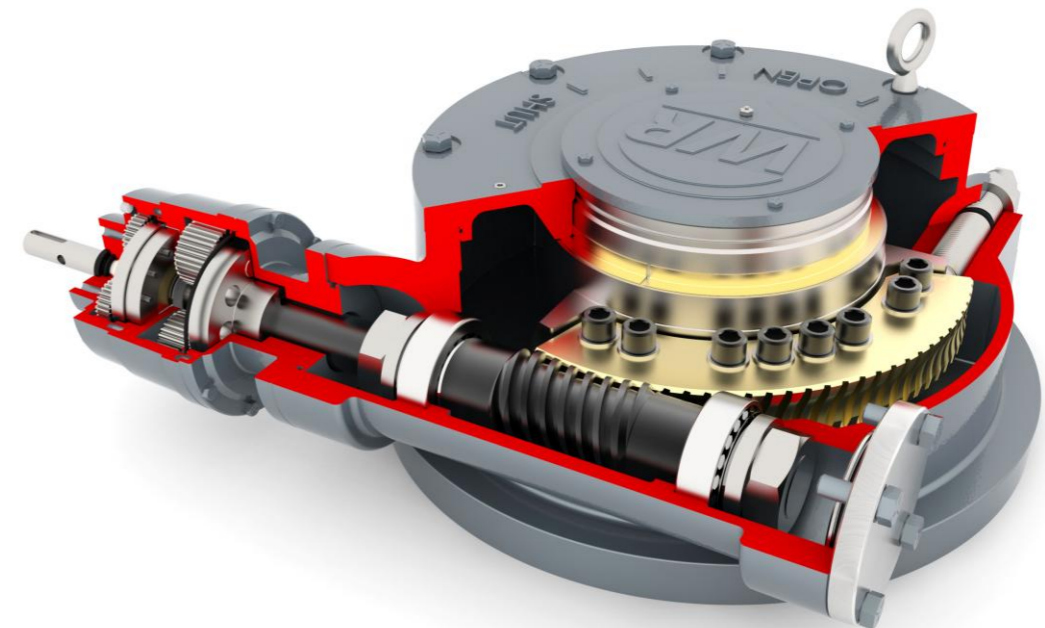


# WedgeRock RW Series

## Material table and service condition

Temperature Service Condition				
service condition	Seal Material	Lubricant	Min Operating Temp	
			F° / °C	Max Operating Temp
Standard service	BUNA	STANDARD GREASE	-40 / -40	225 / 107
High-temp service	VITON	HIGH-TEMP GREASE	-15 / -26	400 / 204
Low-temp service	LOW TEMP BUNA	LOW-TEMP GRASE	-60 / -51	225 / 107
Compensated Subsea service	PTFE / BUNA	COMPENSATION FLUID	-40 / -40	225 / 107

Standard Component Material Selection For Specified Environments						
Component	Service Condition					
	Standard Pipeline		Offshore	Subsea		District Heating
	Topside	Buried	Platform	Shallow	Pompensated	Corrosive
HOUSING/COVER	DUCTILE IRON	DUCTILE IRON	DUCTILE IRON	DUCTILE IRON	DUCTILE IRON	BRONZE
OUTPUT HUB	DUCTILE IRON	DUCTILE IRON	DUCTILE IRON	DUCTILE IRON	DUCTILE IRON	BRONZE
WORMGEAR QUADRANT	BRONZE	BRONZE	BRONZE	BRONZE	BRONZE	BRONZE
WORM	ALLOY STEEL	ALLOY STEEL	ALLOY STEEL	ALLOY STEEL	ALLOY STEEL	ALLOY STEEL
HUB BERING	BRASS	BRASS	BRASS	BRASS	BRASS	BRONZE
INDICATOR	DUCTILE IRON	\	DUCTILE IRON	SUPER DUPLEX STAINLESS STEEL	SUPER DUPLEX STAINLESS STEEL	SUPER DUPLEX STAINLESS STEEL
INPUT SHAFT	STAINLESS STEEL	STAINLESS STEEL	SUPER DUPLEX STAINLESS STEEL	SUPER DUPLEX STAINLESS STEEL	SUPER DUPLEX STAINLESS STEEL	SUPER DUPLEX STAINLESS STEEL
STOPS	ALLOY STEEL	ALLOY STEEL	ALLOY STEEL	ALLOY STEEL	ALLOY STEEL	ALLOY STEEL
JAM NUT (S)	STEEL	SEALED STEEL	SEALED STEEL	SEALED STEEL	SEALED STEEL	SEALED BRONZE
FASTENERS	GRADE 5	GRADE 5	316SS	GRADE 5 / 316SS	GRADE 5 / 316SS	GRADE 5 / 316SS
SEALS	BUNA	BUNA	BUNA	PTFE / BUNA	PTFE / BUNA	BUNA
LUBRICATION	GREASE	GREASE	GREASE	GREASE	OIL	GREASE
FINISH	EPOXY PRIMER	EPOXY PRIMER	EPOXY PRIMER	EPOXY PRIMER	EPOXY PRIMER	N/A



# WedgeRock RW Series

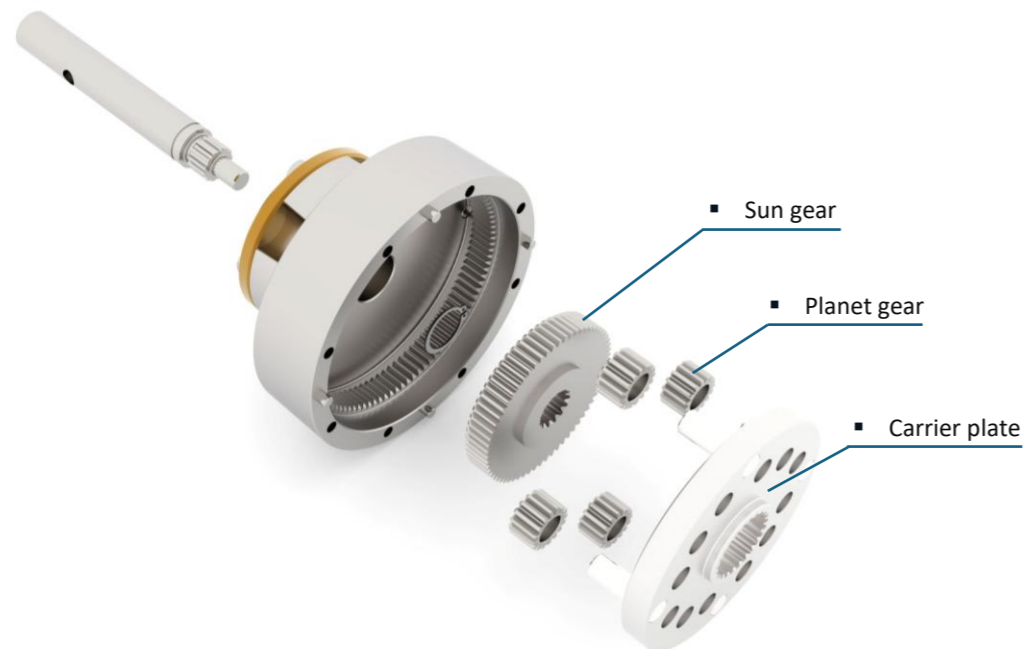
Auxiliary planetary gear assemblies



Common Ratio for RP5 & RP6																	
Common ratio	2,5	2,6	2,71	2,78	2,85	3	3,18	3,29	3,4	3,67	4	4,2	4,43	5	5,80	6,33	9
Mechanical advantage	2,4	2,5	2,6	2,7	2,8	2,9	3,1	3,2	3,3	3,6	3,9	4,1	4,3	4,9	5,6	6,1	8,7

Common Ratio for RP8 and larger																	
Common ratio	2,5	2,6	2,71	2,78	2,85	3	3,18	3,29	3,4	3,67	4	4,2	4,43	5	5,80	6,33	9
Mechanical advantage	2,4	2,5	2,6	2,7	2,8	2,9	3,1	3,2	3,3	3,6	3,9	4,1	4,3	4,9	5,6	6,1	8,7

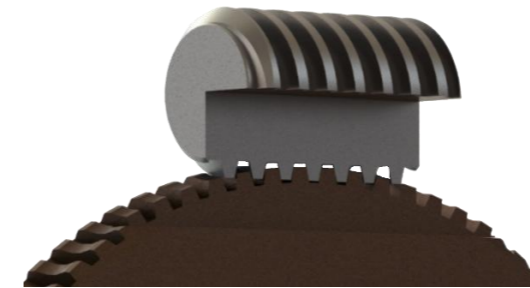
- Additional ratios available upon request.
- Mechanical advantage can fall short of published value by 10% until gearbox has worn in. Wear in should occur within 10 cycles



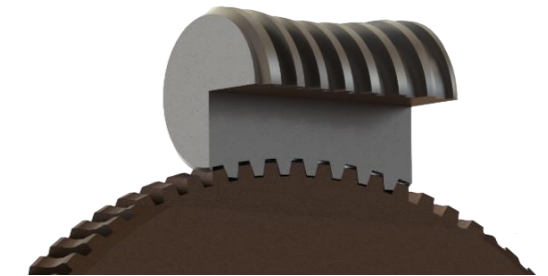
# WedgeRock RW Series

Performance and technical companion

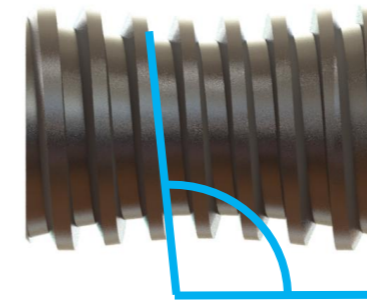
Double enveloping design for **STRENGTH** – Superior shock load capacity



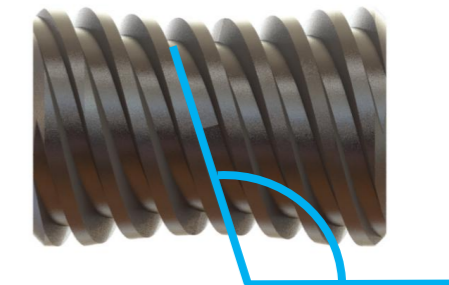
Cylindrical Worm Gear



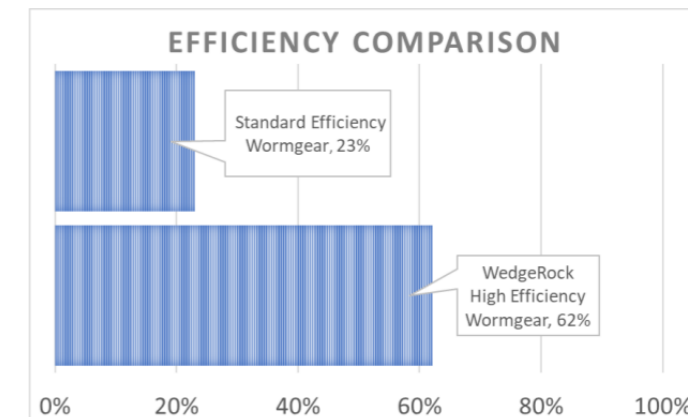
Double Enveloping **WedgeRock** Worm Gear  
More Than 4X The Teeth In Contact



Single Start Standard Efficiency Worm Gear  
Inherently Self-Locking



Multi Start High Efficiency Worm Gear  
Self-Locking Employing Patented PolyLock Clutch



# WedgeRock RW Series

## Worm Gear General Overview Table RW8 to RW34 – High Efficiency

Model	Performance and specification table - HIGH EFFICIENCY																				
	Stage assembly table	Flange Standard ISO-5211 (max/min)	Output Torque rating In-Lbs (Nm)	Gear ratio :1						Mechanical Advantage ±10%						Input Torque In-Lbs (Nm)					
				A	B	C	D	E	F	A	B	C	D	E	F	A	B	C	D	E	F
RW8	F14	38.000	18							11						3.305					
RW8	F16	4.294														373					
RW8+RP5	F14	38.000	47	55	77	91	119	164	29	33	47	56	71	100	1.310	1.136	811	681	538	379	
RW8	F16	4.294													148	128	92	77	61	43	
RW10	F16	75.000	14						9						8.117						
RW10	F25	8.475													917						
RW10+RP5	F16	75.000	36	42	59	70	89	126	23	27	38	45	57	81	3.218	2.789	1.992	1.674	1.322	930	
RW10	F25	8.475													364	315	225	189	149	105	
RW12	F25	135.000	23						15						8.991						
RW12	F35	15.254													1.016						
RW12+RP5	F25	135.000	59	68	96	114	144	205	38	44	61	73	92	131	3.565	3.090	2.207	1.865	1.464	1.030	
RW12	F36	15.254													403	349	249	209	165	116	
RW14	F25	225.000	23						15						14.985						
RW14	F40	25.424													1.693						
RW14+RP6	F25	225.000	59	68	96	114	144	205	38	44	61	73	92	131	5.941	5.149	3.978	3.090	2.441	1.719	
RW14	F40	25.424													671	582	416	349	276	194	
RP14+RP6+RP5	F25	225.000	177	205	287	341	432	614	110	127	178	212	268	381	2.042	1.770	1.264	1.062	839	590	
RP14	F40	25.424													231	200	146	120	95	67	
RW18	F30	400.000	23						15						26.640						
RW18	F48	45.198													3.010						
RW18+RP6	F30	400.000	59	68	96	114	144	205	38	44	61	73	92	131	10.563	9.155	6.539	5.493	4.339	3.052	
RW18	F48	45.198													1.194	1.034	739	621	490	345	
RW18+RP5+RP5	F30	400.000	248	287	401	478	605	860	154	178	249	297	376	534	2.593	2.247	1.605	1.348	105	749	
RW18	F48	45.198													293	254	181	152	120	85	
RW22	F35	750.000	23						15						49.950						
RW22	F60	84.746													5.644						
RW22+RP8	F35	750.000	57	68	91	114	144		36	44	58	73	92		20.598	17.165	12.874	10.299	8.135		
RW22	F60	84.746													2.327	1.940	1.455	1.164	919		
RW22+RP8+RP6	F35	750.000	374	432	605	720	912	1.296	233	268	376	447	566	805	3.226	2.796	1.997	1.677	1.325	932	
RW22	F60	84.746													364	316	226	190	150	105	
RW30	F48	1.350.000	22						15						90.558						
RW30	F48	152.542													10.233						
RW30+RP8	F48	1.350.000	56	57	89	111	141		36	43	58	72	92		37.344	31.120	23.340	18.672	14.749		
RW30	F48	152.542													4.220	5.216	2.637	2.110	1.667		
RW30+RP8+RP6	F48	1.350.000	145	167	234	278	352	501	91	105	147	175	222	316	14.807	12.833	9.166	7.700	6.082	4.278	
RW30	F48	152.542													1.673	1.450	1.036	870	687	483	
RW30+RP8+RP6	F48	1.350.000	289	334	467	556	704	1.001	182	210	295	351	444	631	7.404	6.416	4.583	3.850	3.041	2.139	
RW30	F48	152.542													837	725	518	435	344	242	
RW30+RP8+RP6+RP5	F48	1.350.000	868	1.001	1.402	1.669	2.113	3.004	531	612	857	1.020	1.292	1.837	2.544	2.205	1.575	1.323	1.045	735	
RW30	F48	152.542													287	249	178	149	118	83	
RW34	F48	2.250.000	27						18						123.237						
RW34	F48	254.237													13.925						
RW34+RP9	F48	2.250.000	68	82	109	136			44	53	71	89			50.819	42.349	31.762	25.410			
RW34	F48	254.237													5.742	4.785	3.598	2.871			
RW34+RP9+RP6	F48	2.250.000	177	204	286	341	431	613	112	129	180	215	272	387	20.150	17.464	12.474	10.478	8.277	5.821	
RW34	F48	254.237													2.277	1.973	1.410	1.184	935	658	
RW34+RP9+RP6	F48	2.250.000	354	409	572	681	862	1.226	223	258	361	429	544	773	10.075	8.732	6.237	5.239	4.138	2.911	
RW34	F48	254.237													1.138	987	705	592	468	329	
RW34+RP9+RP6+RP5	F48	2.250.000	1.417	1.635	2.289	2.725	3.450	4.905	866	1.000	1.400	1.666	2.110	2.999	2.597	2.250	1.607	1.350	1.067	750	
RW34	F48	254.237													293	254	182	153	121	85	
RW42	F60	4.000.000	33						22						123.237						
RW42	F60	451.977													13.925						
RW42+RP10	F60	4.000.000	83	100	133	166			53	64	85	106			75.164	62.637	46.978	37.582			
RW42	F60	451.977													8.493	7.078	5.308	4.247			
RW42+RP10+RP8	F60	4.000.000	249	299	399	499	631		155	186	248	310	392		25.830	21.525	16.144	12.915	10.201		
RW42	F60	451.977													2.919	2.432	1.824	1.459	1.153		
RW42+RP10+RP8	F60	4.000.000	416	499	665	831	1.052	1.496	258	310	413	516	654	929	15.498	12.915	9.686	7.749	6.121	4.305	
RW42	F60	451.977													1.751	1.459	1.094	876	692	486	
RW42+RP10+RP8+RP6	F60	4.000.000	1.297	1.496	2.095	2.494	3.157	4.489	781	901	1.262	1.502	1.902	2.704	5.121	4.438	3.170	2.663	2.106	1.479	
RW42	F60	451.977													579	501	358	301	238	167	
RW42+RP10+RP8+RP6	F60	4.000.000	2.161	2.494	3.491	4.156	5.262	7.481	1.302	1.502	2.103	2.504	3.170	4.506	3.073	2.663	1.902	1.598	1.262	888	
RW42	F60	451.977													347	301	215	181	143	100	
RW42H	F60	7.500.000	33						25						341.763						
RW42H	F60	847.458													38.617						
RW42H+RP12	F60	7.500.000	83	100	133	166			53	64	85	106			140.933	117.445	88.083	70.467			
RW42H	F60	847.458													15.925	13.271	9.953	7.962			
RW42H+RP12+RP8	F60	7.500.000	416	499	665	831	1.052		258	310	413	516	654		29.058	24.215	18.162	14.529	11.476		
RW42H	F60	847.458													3.283	2.736	2.052	1.642	1.297		
RW42H+RP12+RP8+RP6	F60	7.500.000	1.729	1.995	2.793	3.325	4.206	5.985	1.041	1.202	1.682	2.003	2.536	3.605	7.201	6.241	4.459	3.745	2.958	2.080	
RW42H	F60	847.458													814	705	504	423	334	235	
RW42H+RP12+RP8+RP6	F60	7.500.000	3.890	4.489	6.284	7.481	9.471	13.466	2.343	2.704	3.785	4.506	5.705	8.112	3.201	2.774	1.981	1.664	1.315	925	
RW42H	F60	847.458													362	313	224	188	149	104	
RW52	28" / 60"	12.500.000	44						25						495.589						
RW52	28" / 60"	1.412.429													55.999						
RW52+RP14	28" / 60"	12.500.000	111	133	177	221	280		61	73	98	122	155		204.367	170.306	127.729	102.183	80.714		
RW52	28" / 60"	1.412.429													23.092	19.244	14.433	11.546	9.120		
RW52+RP14+RP8	28" / 60"	12.500.000	700	810	1120	1401	1773	2521	376	451	601	751	951	1352	33.284	27.737	20.802	16.642	13.145	9.246	
RW52	28" / 60"	1.412.429													3.761	3.134	2.351	1.880	1.485	1.045	
RW52+EP14+RP8+RP6	28" / 60"	12.500.000	1.821	2.101	2.941	3.501	4.433	6.302	947	1.093	1.530	1.821	2.306	3.279	13.197	11.438	8.170	6.863	5.421	3.813	
RW52	28" / 60"	1.412.429													1.491	1.292	923	775	613	431	
RW52+EP14+RP8+RP6	28" / 60"	12																			

# WedgeRock RW Series

## Worm Gear General Overview Table RW8 to RW34 – Standard Efficiency

Model	Performance and specification table - STANDARD EFFICIENCY																									
	Stage assembly table	Flange Standard ISO-5211 (max/min)	Output Torque rating In-Lbs (Nm)	Gear ratio :1						Mechanical Advantage ±10%						Input Torque In-Lbs (Nm)										
				A	B	C	D	E	F	A	B	C	D	E	F	A	B	C	D	E	F					
RW8	F14	38.000	73	\						26	\						1.487 168	\								
	F16	4.294		\							\															
RW8+RP5	F14	38.000	190	219	307	365	462	657	64	74	104	124	157	223	590	511	365	307	242	170	67	58	41	35	27	19
	F16	4.294		\						\																
RW10	F16	75.000	56	\						22	\						3.348 378	\								
	F25	8.475		\							\															
RW10+RP5	F16	75.000	146	168	235	280	354	504	56	65	91	109	138	196	1.328	1.151	822	690	545	384	150	130	93	78	62	43
	F25	8.475		\						\																
RW12	F25	135.000	91	\						32	\						4.239 479	\								
	F35	15.254		\							\															
RW12+RP5	F25	135.000	237	273	382	455	576	819	80	93	130	154	196	278	1.681	1.457	1.040	874	690	486	190	165	118	99	78	55
	F36	15.254		\						\																
RW14	F25	225.000	91	\						31	\						7.064 798	\								
	F40	25.425		\							\															
RW14+RP5	F25	225.000	237	273	382	455	576	819	80	93	130	154	196	278	2.801	2.428	1.734	1.457	1.151	809	317	274	196	165	130	91
	F40	25.424		\						\																
RP14+RP6+RP5	F25	225.000	615	710	994	1.183	1.498	2.129	203	234	327	390	493	701	1.111	963	688	578	456	321	223	193	138	116	92	64
	F40	25.424		\						\																
RW18	F30	400.000	91	\						32	\						12.559 1.419	\								
	F48	45.198		\							\															
RW18+RP6	F30	400.000	237	273	382	455	576	819	80	93	130	154	196	278	4.980	4.316	3.083	2.589	2.045	1.439	563	488	348	293	231	163
	F48	45.198		\						\																
RW18+RP6+RP5	F30	400.000	615	710	994	1.183	1.498	2.129	203	234	327	390	493	701	1.975	1.711	1.222	1.027	811	570	223	193	138	116	92	64
	F48	45.198		\						\																
RW22	F35	750.000	91	\						32	\						23.548 2.661	\								
	F60	84.746		\							\															
RW22+RP6	F35	750.000	237	273	382	455	576	819	80	93	130	154	196	278	9.337	8.092	5.780	4.855	3.835	2.697	1.055	914	653	549	433	305
	F60	84.746		\						\																
RW22+RP6+RP5	F35	750.000	994	1.147	1.605	1.911	2.419	3.440	327	378	529	629	797	1.133	2.292	1.986	1.419	1.192	941	662	259	224	160	135	106	75
	F60	84.746		\						\																
RW30	F48	1.350.000	89	\						35	\						38.894 4.395	\								
	F48	152.542		\							\															
RW30+RP8	F48	1.350.000	223	267	356	445	563	801	84	101	135	168	213	303	16.039	13.366	10.024	8.019	6.334	4.455	1.812	1.510	1.133	906	716	503
	F48	152.542		\						\																
RW30+RP8+RP6	F48	1.350.000	579	668	935	1.113	1.408	2.003	212	245	343	408	517	735	6.359	5.512	4.024	3.019	2.334	1.655	719	623	445	374	295	208
	F48	152.542		\						\																
RW30+RP8+RP6	F48	1.350.000	1.157	1.335	1.869	2.225	2.817	4.005	425	490	686	816	1.034	1.470	3.180	2.756	1.968	1.653	1.306	919	359	311	222	187	148	104
	F48	152.542		\						\																
RW34	F48	2.250.000	109	\						41	\						54.322 6.138	\								
	F48	254.237		\							\															
RW34+RP8	F48	2.250.000	273	327	436	545	690	\	100	121	161	201	254	\	22.401	18.667	14.000	11.200	8.847	\	2.531	2.109	1.582	1.266	1.000	\
	F48	254.237		\						\																
RW34+RP8+RP6	F48	2.250.000	709	818	1.145	1.363	1.725	2.453	253	292	409	487	617	877	8.882	7.698	5.498	4.619	3.648	2.566	1.004	870	621	522	412	290
	F48	254.237		\						\																
RW34+RP8+RP6	F48	2.250.000	1.417	1.635	2.289	2.725	3.450	4.905	507	585	818	974	1.233	1.754	4.441	3.846	2.749	2.309	1.824	1.283	502	435	311	261	206	145
	F48	254.237		\						\																
RW34+RP9+RP6+RP5	F48	2.250.000	2.126	2.453	3.434	4.088	5.175	7.358	737	851	1.191	1.418	1.795	2.552	3.052	2.645	1.889	1.587	1.254	882	345	299	214	179	142	100
	F48	254.237		\						\																

# WedgeRock RW Series

## Worm Gear General Overview Table RW42 to RW52 – Standard Efficiency

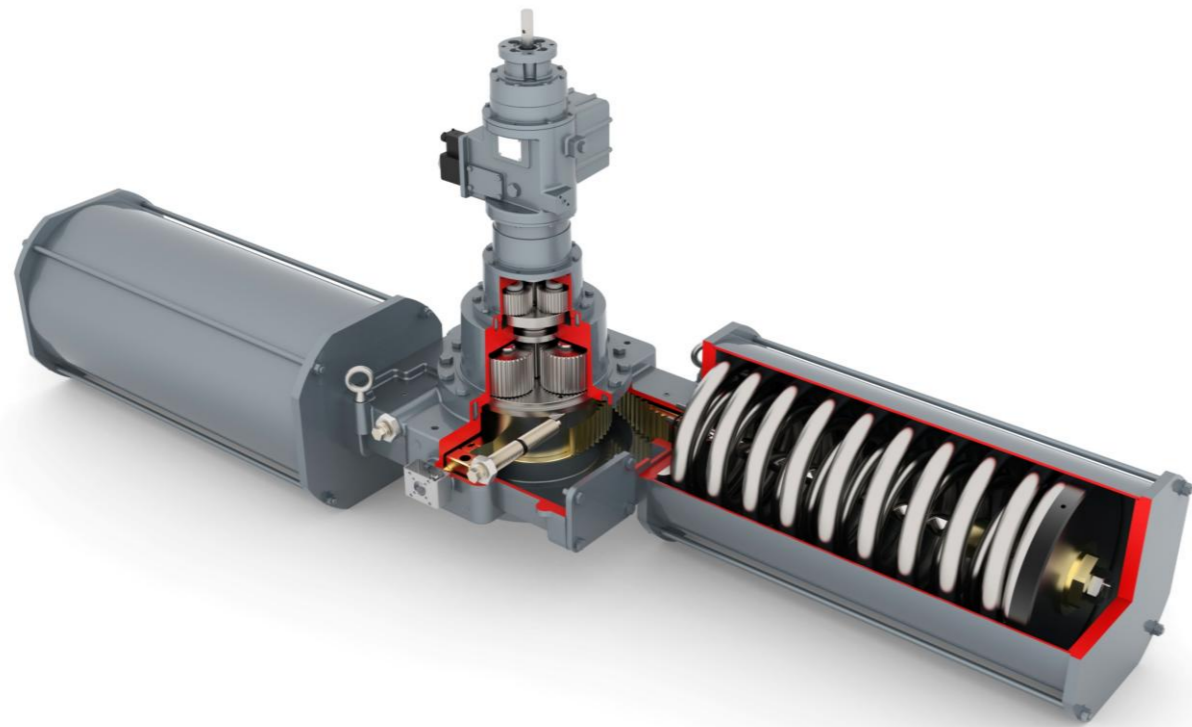
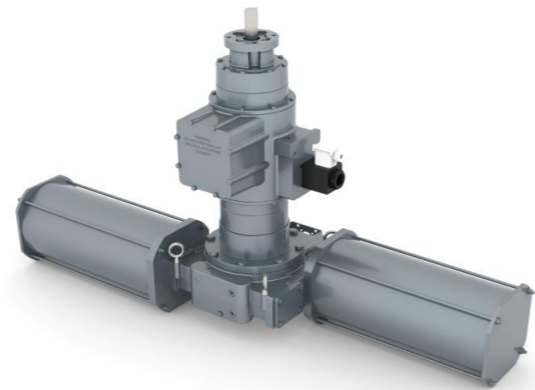
Model	Performance and specification table - STANDARD EFFICIENCY																									
	Stage assembly table	Flange Standard ISO-5211 (max/min)	Output Torque rating In-Lbs (Nm)	Gear ratio :1						Mechanical Advantage ±10%						Input Torque In-Lbs (Nm)										
				A	B	C	D	E	F	A	B	C	D	E	F	A	B	C	D	E	F					
RW42	F60	4.000.000	133	\						44	\						91.137 10.298	\								
		451.977		\							\															
RW42+RP10	F60	4.000.000	333	399	352	665	842	1.197	106	128	170	213	269	383	37.582	31.319	23.489	18.791	14.843	10.440	4.247	3.539	2.654	2.123	1.677	1.180
		451.977		\						\																
RW42+RP10+RP8	F60	4.000.000	865	998	1.397	1.663	2.105	2.993	268	310	434	516	654	929	14.902	12.915	9.225	7.749	6.121	4.305	1.684	1.459	1.042	876	692	486
		451.977		\						\																
RW42+RP10+RP8	F60	4.000.000	1.729	1.995	2.793	3.325	4.209	5.985	537	619	867	1.032	1.307	1.858	7.451	6.425	4.612	3.874	3.060	2.152	842	730	521	438	346	243
		451.977		\						\																
RW42+RP10+RP8+RP6	F60	4.000.000	4.323	4.988	6.983	8.313	10.524	14.963	1.302	1.502	2.103	2.504	3.170	4.506	3.073	2.663	1.902	1.598	1.262	888	347	301	215	181	143	100
		451.977		\						\																
RW42H	F60	7.500.000	133	\						44	\						170.882 19.309	\								
		847.458		\							\															
RW42H+RP9	F60	7.500.000	333	399	532	665	\	\	106	128	170	213	\	\	70.467	58.722	44.042	35.233	\	\	7.962	6.635	4.976	3.981	\	\
		847.458		\						\																
RW42H+RP9+RP8	F60	7.500.000	831	998	1.330	1.663	\	\	258	310	413	516	\	\	29.058	24.215	18.162	14.529	\	\	3.283	2.736	2.052	1.642	\	\
		847.458		\						\																
RW42H+RP9+RP8	F60	7.500.000	1.663	1.995	2.660	3.325	4.209	5.985	516	619	826	1.032	1.307	1.858	14.529	12.108	9.081	7.265	5.738	4.036	1.642	1.368	1.026	821	648	456
		847.458		\						\																
RW42H+RP12+RP8+RP6	F60	7.500.000	4.323	4.988	5.983	8.313	10.524	14.963	1.302	1.502	2.103	2.504	3.170	4.506	5.761	4.933	3.566	2.996	2.366	1.664	651	564	403	338	267	188
		847.458		\						\																
RW42H+RP12+RP8+RP6	F60	7.500.000	8.645	9.975	13.965	16.625	21.047	29.925	2.604	3.004	4.206	5.007	6.339	9.013	2.880	2.496	1.783	1.498	1.183	832	325	282	201	169	134	94
		847.458		\						\																
RW52	28" / 60"	13.500.000	177	\						46	\						293.351 33.147	\								
		1.525.424		\							\															
RW52+RP14	28" / 60"	13.500.000	443	531	708	885	\	\	112	134	179	223	\	\	120.969	100.808	75.606	64.085	\	\	13.669	11.391	8.543	6.834	\	\
		1.525.424		\						\																
RW52+RP14+RP8	28" / 60"	13.500.000	1328	1593	2124	2655	\	\	325	390	520	650	\	\	41.570	34.642	25.981	20.785	\	\	4.697	3.914	2.936	2.349	\	\
		1.525.424		\						\																
RW52+EP14+RP8+RP6	28" / 60"	13.500.000	2.213	2.655	3.540	4.425	5.602	\	541	650	866	1.083	1.370	\	24.942	20.785	15.589	12.471	9.851	\	2.818	2.349	1.761	1.409	1.113	\
		1.525.424		\						\																
RW52+EP14+RP8+RP6	28" / 60"	13.500.000	5.522	6.372	8.921	10.620	13.445	19.116	1.310	1.512	2.117	2.520	3.190	4.536	10.302	8.929	6.377	5.357	4.231	2.976	1.164	1.009	721	605	478	336
		1.525.424		\						\																
RW52+EP14+RP8+RP6	28" / 60"	13.500.000	20.709	23.895	33.453	39.825	50.418	71.685	4.914	5.670	7.938	9.450	11.964	17.010	2.747	2.381	1.701	1.429	1.128	794	310	269	192	161	128	90
		1.525.424		\						\																
RW52H	28" / 60"	20.000.000	177	\						46	\						434.594 49.107	\								
		2.259.887		\							\															
RW52H+RP14	28" / 60																									

# WedgeRock RS Series

The **WedgeRock** RS & RSDR Mechanical Spring Return: Engineered for versatility, it scales from 5,000 to 4,500,000 in-lbs. Whether you need Quarter Turn or Linear configurations, Manual or Electric Operation, this device is tailored to meet your requirements. Boasting High Efficiency Gear design, it's suitable for diverse environments, from pipelines to subsea. Whether an electric or manual build we ensure optimal performance without hydraulic hassles. Additional highlights include a Positive Lock Mechanism, Low Solenoid Power Consumption, and certifications like Buy America, ATEX, and SIL 3 capability. The RS & RSDR combines robustness with efficiency in actuation.

## Features:

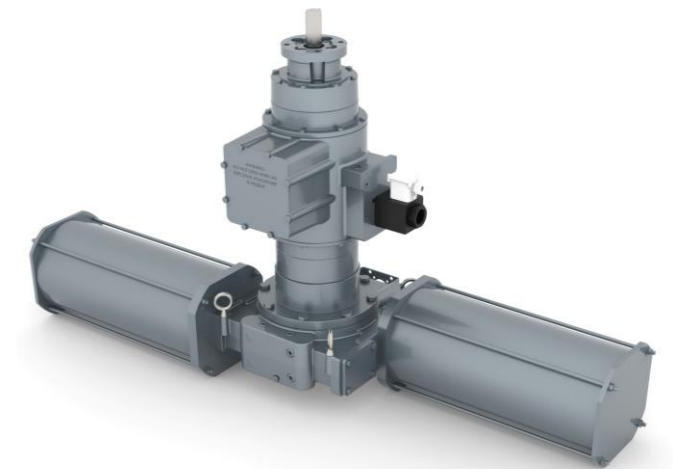
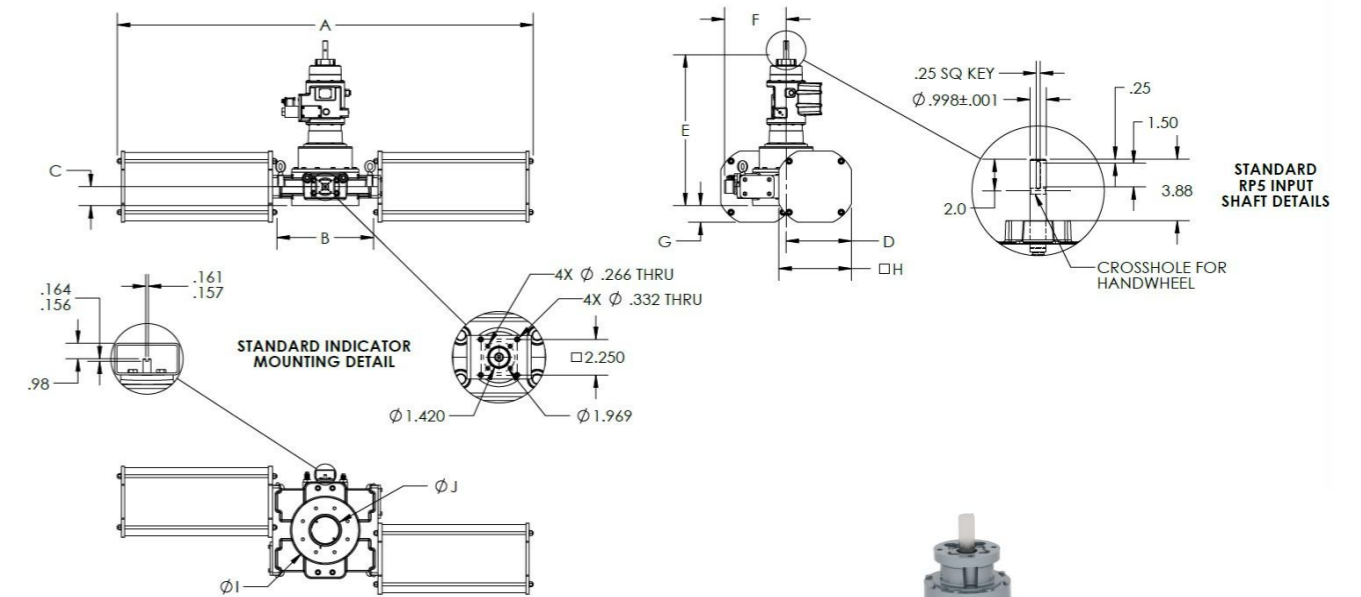
- High-efficiency gear train
- Self-Locking design
- Mechanical stops with  $\pm 5^\circ$  adjustment at each end of quarter-turn travel
- 90% grease-filled, maintenance-free for life
- Elastomer ingress seals, tested to IP68 rating
- Input shaft options: parallel or perpendicular to output
- Adjustable fail-stroke time
- NAMUR mounting for absolute valve position indication
- Input lockout feature
- Modular design for quarter-turn applications accommodates:
  - Fail-Clockwise
  - Fail-Counterclockwise



# WedgeRock RS Series

## Envelope dimension and weight

MODEL	A (mm)	B (mm)	C (mm)	D (mm)	E (mm)	F (mm)	G (mm)	H (mm)	I (mm)	J (mm)	WEIGHT (kg)
RSDR6	45,8	10,0	6,0	6,9	23,7	2,9	1,5	7,5	8,8	3,7	352,0
	1.163	254	152	175	602	74	38	191	224	94	160
RSDR7	53,1	11,9	6,7	7,8	26,1	2,9	1,8	8,5	9,9	4,4	469,0
	1.349	302	170	198	663	74	46	216	251	112	213
RSDR8	69,9	14,1	8,8	9,5	30,5	2,9	1,7	10,5	11,6	5,3	838,0
	1.775	358	224	241	775	74	43	267	295	135	380
RSDR9	86,0	20,0	11,5	13,5	31,8	2,9	3,5	15,0	13,8	6,8	1.430,0
	2.184	508	292	343	808	74	89	381	351	173	649
RSDR10	86,0	20,0	11,4	13,5	38,4	2,9	3,6	15,0	16,7	6,8	1.840,0
	2.184	508	290	343	975	74	91	381	424	173	835
RSDR12	112,3	25,0	5,6	16,9	38,9	15,7	3,8	18,8	18,5	8,8	3.382,0
	2.852	635	142	429	988	399	97	478	470	224	1.534
RSDR14	132,8	30,8	7,0	22,0	45,6	18,6	5,5	25,0	21,7	11,0	5.842,0
	3.373	782	178	559	1.158	472	140	635	551	279	2.650
RSDR18	132,8	30,8	7,0	25,0	52,3	20,0	5,5	25,0	27,0	14,3	8.702,0
	3.373	782	178	635	1.329	508	140	635	686	362	3.947
RSDR24	157,1	40,0	8,5	27,0	58,4	24,0	7,2	30,0	32,0	16,3	10.494,0
	3.990	1.016	216	686	1.483	610	183	762	813	413	4.760
RSDR36	209,4	53,3	10,0	36,0	73,8	30,0	9,6	38,0	44,0	19,3	17.351,0
	5.319	1.355	254	914	1.873	762	244	965	1.118	489	7.870

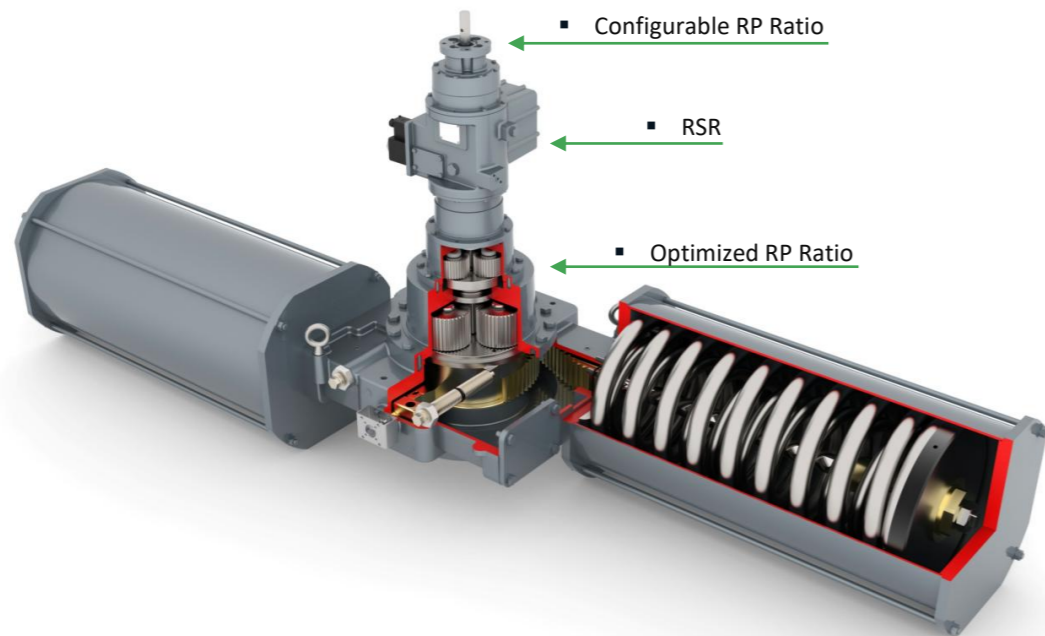


# WedgeRock RS Series

## Output torque rating

Frame Size	Frame Rating	Spring Can	RSDR Output Torque (Nm)						Standard Gear Stack Configuration & Ratios	Total Gear Ratio							Mechanical Advantage +/- 10%							RSDR Input Torque For Max Rating (Nm)						
			Fall (Spring)			Max Operated				1,00	2,60	3,00	4,20	5,00	6,33	9,00	A	B	C	D	E	F	G	A	B	C	D	E	F	G
			Start	Run	End	Start	Run	End		A	B	C	D	E	F	G	A	B	C	D	E	F	G	A	B	C	D	E	F	G
RSDR6	3164	60	949	883	816	2348	2281	2215	RP6-9,0 / RSR5-2	10	26	30	43	51	64	91	5	13	15	22	26	33	46	595	236	204	146	123	91	68
		80	1266	1177	1088	2075	1987	1898		16,9	44	51	71	84	107	152	9	21,7	25	35	42	53	75	591	235	203	145	122	96	68
		100	1582	1471	1360	1803	1693	1582		28	73	84	118	141	178	253	14	36	42	58	69	88	125	591	235	203	145	122	96	68
RSDR7	5085	60	1525	1419	1312	3773	3666	3559	RP6H-5,0 / RP5-3,0 / RSR5-2	16,9	44	51	71	84	107	152	9	21,7	25	35	42	53	75	591	235	203	145	122	96	68
		80	2034	1892	1749	3336	3193	3051		28	73	84	118	141	178	253	14	36	42	58	69	88	125	591	235	203	145	122	96	68
		100	2542	2364	2186	2898	2720	2542		28	73	84	118	141	178	253	14	36	42	58	69	88	125	591	235	203	145	122	96	68
RSDR8	8475	60	2542	2364	2186	6288	6110	5932	RP8-5,0 / RP6-5,0 / RSR-2	28	73	84	118	141	178	253	14	36	42	58	69	88	125	591	235	203	145	122	96	68
		80	3390	3153	2915	5559	5322	5085		51	132	153	213	253	320	456	26	65	75	105	125	158	225	591	235	203	145	122	96	68
		100	4237	3941	3644	4831	4534	4237		93	241	278	389	463	586	833	46	115	133	186	222	281	399	556	220	191	135	115	91	64
RSDR9	15254	60	4576	4256	3936	11319	10998	10678	RP9-5,0 / RP6-9,0 / RSR5-2	51	132	153	213	253	320	456	26	65	75	105	125	158	225	591	235	203	145	122	96	68
		80	6102	5675	5247	10007	9580	9153		93	241	278	389	463	586	833	46	115	133	186	222	281	399	556	220	191	135	115	91	64
		100	7627	7093	6559	8695	8161	7627		141	366	422	591	703	890	1266	69	175	202	283	337	427	607	650	258	224	160	134	106	75
RSDR10	25424	60	7627	7093	6559	18864	18331	17797	RP10-5,0 / RP8-5,0 / RP6-3,29 / RSR5-2	93	241	278	389	463	586	833	46	115	133	186	222	281	399	556	220	191	135	115	91	64
		80	10169	9458	8746	16678	15966	15254		141	366	422	591	703	890	1266	69	175	202	283	337	427	607	650	258	224	160	134	106	75
		100	12712	11822	10832	14492	13602	12712		320	833	961	1346	1602	2028	2884	158	399	461	645	768	972	1382	535	313	184	131	110	87	61
RSDR12	45198	60	13559	12610	11661	33537	32588	31638	RP12-5,0 / RP8-5,0 / RP6-5,0 / RSR5-2	141	366	422	591	703	890	1266	69	175	202	283	337	427	607	650	258	224	160	134	106	75
		80	18079	16814	15548	29650	28384	27119		320	833	961	1346	1602	2028	2884	158	399	461	645	768	972	1382	535	313	184	131	110	87	61
		100	22599	21017	19435	25763	24181	22599		759	1974	2278	3189	3797	4807	6834	364	918	1059	1483	1765	2235	3178	419	166	144	103	86	68	48
RSDR14	84746	60	25424	23644	21864	62881	61102	59322	RP14-5,0 / RP12-6,3 / RP8-9,0 / RSR5-2	320	833	961	1346	1602	2028	2884	158	399	461	645	768	972	1382	535	313	184	131	110	87	61
		80	33898	31525	29153	55593	53220	50847		759	1974	2278	3189	3797	4807	6834	364	918	1059	1483	1765	2235	3178	419	166	144	103	86	68	48
		100	42373	39407	36441	48305	45339	42373		1266	3291	3797	5316	6328	8011	1139	607	1530	1765	2472	2942	3725	5296	419	166	144	103	86	68	48
RSDR18	152542	60	45763	42559	39356	113186	109983	106780	RP18-5,0 / RP12-5,0 / RP8-3,0 / RSR6-1,125 / RP6-9,0	759	1974	2278	3189	3797	4807	6834	364	918	1059	1483	1765	2235	3178	419	166	144	103	86	68	48
		80	61017	56746	52475	100068	95797	91525		1266	3291	3797	5316	6328	8011	1139	607	1530	1765	2472	2942	3725	5296	419	166	144	103	86	68	48
		100	76271	70932	65593	86949	81610	76271		2109	5484	6328	8859	1054	1335	1898	981	2474	2854	3996	4757	6022	8562	518	206	178	127	107	84	59
RSDR24	254237	60	76271	70932	65593	188644	183305	177966	RP24-5,0 / RP14-5,0 / RP8-5,0 / RSR8-1,125 / RP8-3,0 / RP6-5,0	1266	3291	3797	5316	6328	8011	1139	607	1530	1765	2472	2942	3725	5296	419	166	144	103	86	68	48
		80	101695	94576	87458	166780	159661	152452		2109	5484	6328	8859	1054	1335	1898	981	2474	2854	3996	4757	6022	8562	518	206	178	127	107	84	59
		100	127119	118220	109322	144915	136017	127119		2109	5484	6328	8859	1054	1335	1898	981	2474	2854	3996	4757	6022	8562	518	206	178	127	107	84	59
RSDR36	508475	60	135593	126102	116610	391864	382373	372881	RP36-5,0 / RP18-5,0 / RP10-5,0 / RSR8-1,125 / RP8-3,0 / RP6-5,0	2109	5484	6328	8859	1054	1335	1898	981	2474	2854	3996	4757	6022	8562	518	206	178	127	107	84	59
		80	108791	168136	155480	352994	340339	327684		2109	5484	6328	8859	1054	1335	1898	981	2474	2854	3996	4757	6022	8562	518	206	178	127	107	84	59
		100	225989	210169	194350	314124	298305	282486		2109	5484	6328	8859	1054	1335	1898	981	2474	2854	3996	4757	6022	8562	518	206	178	127	107	84	59

\*To read the table correctly, associate the columns with the same letter



# WedgeRock RS Series

## Service condition

### Explosion Protection

Available explosion protection configuration conforms to ATEX requirements for T3 or T4. The following is the standard ATEX rating:

II 2 G Ex h IIC T4 Gb  
II 2 D Ex h IIIC T135°C Db

### SIL

The RSDR conforms to SIL and is certified by Exida in compliance with IEC 61508. The RSDR is SIL3 capable.

### Enclosure Protection

Mechanical portion of the RSDR is designed and tested to seal while submerged in over 1m of water per IP68.

SERVICE CONDITION	MIN TEMP.	
	°F	°F
	°C	°C
STANDARD SERVICE (SIL)	-40	160
	-40	70
EXTENDED SERVICE	-60	240
	-51	115
ATEX T4 STANDARD	-31	160
	-35	70
ATEX T4 EXTENDED	-60	160
	-61	70

# MAXNOVO



WEDGEROCK  
ENGINEERED SOLUTIONS

**Maxnovo Srl - VPS Italy Srl**  
Production & Warehouse

Via S. Carlo Borromeo 19/A – 24060 Cenate Sopra (BG)  
Phone: +39 035 0266758 / +39 035 039 30 64

[www.maxnovo.it](http://www.maxnovo.it)  
[sales@maxnovo.it](mailto:sales@maxnovo.it)

[www.vpsitaly.com](http://www.vpsitaly.com)  
[sales@vpsitaly.com](mailto:sales@vpsitaly.com)