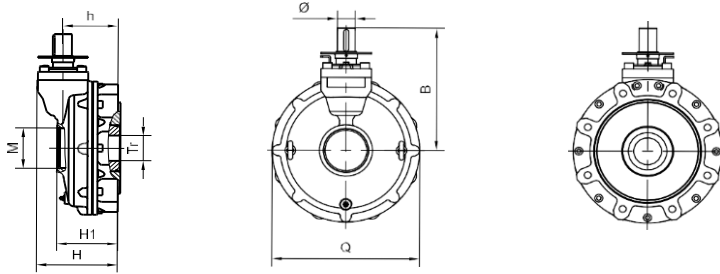


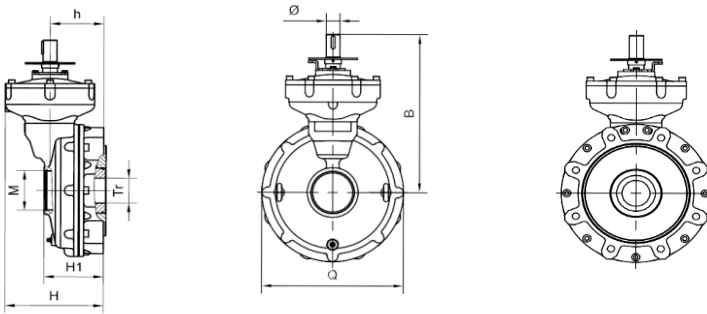
MAXNOVO CR Series Bevel Gearbox

Heavy-duty multi-turn gearboxes suitable for sluice gate, gate valves, globe and pinch valves serving oil & gas, water, power, chemical and demanding industrial application.

CR Series



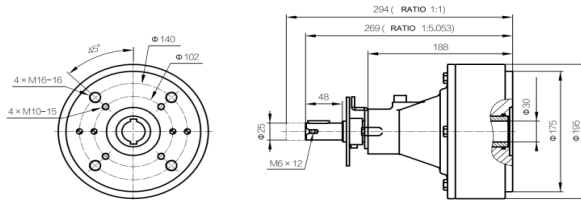
CR-S Series



Maxnovo Dual Speed Ratio is a dual speed gear that allows to reduce the number of rotations to open and close the valve reducing the operating time on manual valve applications. DSG speed ratio can be easily switched by pushing or pulling the input shaft.

The high-speed ratio is used for high torque needs when the valve is opened (BTO) and finally closed (ETC) to achieve easy opening and closing action without applying excessive force at the handwheel. The low-speed ratio is used to quickly open or close the valve during the low torque (gear) process.

- Pull the input shaft for Ratio 1:1
- Push the input shaft for Ratio 5.053:1
- Locking device as standard



- Output torque up to 70.000 Nm and Thrust Capacity up to 7200 kN
- Easy to install and operate, maintenance free
- Ductile Iron / Carbon Steel / Stainless Steel / Low Temperature Carbon Steel
- Handwheel operated or motorizable output flange acc. to ISO 5210
- Accessories available on request: Position indicator, Plates, Shafts, Locking Device, Chainwheels and Interlock

Model	Flange	ISO 5211 Output flange - Performance data							Outline dimensions							Weight kg	
		Maximum stem bore			Ratio	Mechanical Advnatage +10%	Input torque Nm	Maximum output torque Nm	Maximum Thrust kN	Q mm	H1 mm	H mm	h mm	B mm	Φ mm		M
		ZN mm	ZQ mm	N mm													
CR01	F10		26		2,7	2,2	121	260	98	145	80	102,5	65,5	160	23	M33.5x2	8,5
CR02	F12 F10	26	36	32	3,1	2,5	182	450	125	165	88,5	110	73	172	23	M42x2	11,5
CR03	F14 F12 F10	30	44	39	3,6	2,8	245	696	150	175	91,5 96,5	115	78 77	180	23	M60x2	14,5
CR04	F16 F14 F12	40	52	42	3,9	3,1	320	1002	190	210	103	131	87	209,5	28	M60x2	22
CR05	F20 F16 F14	45	62	52	4,4	3,5	459	1602	215	237	110,5	138,5	94,5	224	28	M76x2	31
CR05S	F20 F16 F14	45	62	52	22,2	17,4	92	1602	215	237	110,5	192	94,5	296	28	M76x2	35
CR05.5	F25 F16 F14	50	72	60	4,6	3,7	590	2145	258	270	116,5	150	105	244	35	M88.5x2	43
CR05.5S	F25 F16 F14	50	72	60	22,8	16,4	132	2145	258	270	116,5	202,5	105	314,5	28	M88.5x2	53
CR06	F25 F16	55	80	60	4,7	3,8	798	3000	300	292	120,5	160	109	254	35	M88.5x2	41,5
CR06S	F25 F16	55	80	60	23,8	17,1	172	3000	300	292	120,5	206,5	109	324,5	28	M88.5x2	52
CR07	F30 F25	64	90	74	5,3	4,2	980	4155	388	328	139,5	173	122	275	35	M114x2	61
CR07S	F30 F25	64	90	74	26,8	19,3	211	4155	388	328	139,5	219,5	122	345,5	28	M114x2	70,5
CR08	F30 F25	75	105	92	5,8	4,6	1190	5500	622	359	164,5	188	135	291	40	M114x2	74,5
CR08S	F30 F25	75	105	92	42	30,2	178	5500	622	359	164,5	274,5	135	389,5	28	M114x2	96,5
CR09	F35 F30 F25	97	130	112	6,3	5,1	1945	9854	755	447	176	214	154	341	40	M164.5x2	118
CR09S	F35 F30 F25	97	130	112	46	33,1	291	9854	755	447	176	293,5	154	436	28	M164.5x2	140
CR10S	F40 F35 F30	110	160	122	60,7	43,7	320	14310	1160	488	220	367,5	193	468	28	M218.5x2	225
CR11S	F48 F40			140	238	190,4	132	25000	1500	632	270,5	494	190	608	28	M218.5x2	411
CR12S	F60 F48			200	606/120	460/96	108.5/521	50000	5400	763	420	693,5	303	929	25	M299x5	840
CR13S	F60 F48			230	886/175	672/140	104/500	70000	7300	853	445	780	337	1004	25	M337x5	1317